



April 30, 2024

FY 2025 Budget

Board of Education Public Hearing

Tony B. Watlington, Sr. Ed.D.
Superintendent



THE SCHOOL DISTRICT OF
PHILADELPHIA





Overview

- **Academic Recovery**
- **FY 2025 Budget Overview**
 - Budgeting Priorities
 - FY 2025 Lump Sum Budget
- **Facilities Update**
 - Capital Improvement Plan Update
 - Facilities Planning: An 8-Phase Process
- **Other District Updates**
 - School Selection
 - Positions & Staffing
- **Next Steps**



Academic Recovery





Philly schools tops in big-city U.S. districts in academic recovery: takeaways from the school board meeting

Measured against other large, poor urban districts, Philadelphia approached its pre-pandemic math achievement faster than any other city's schools.

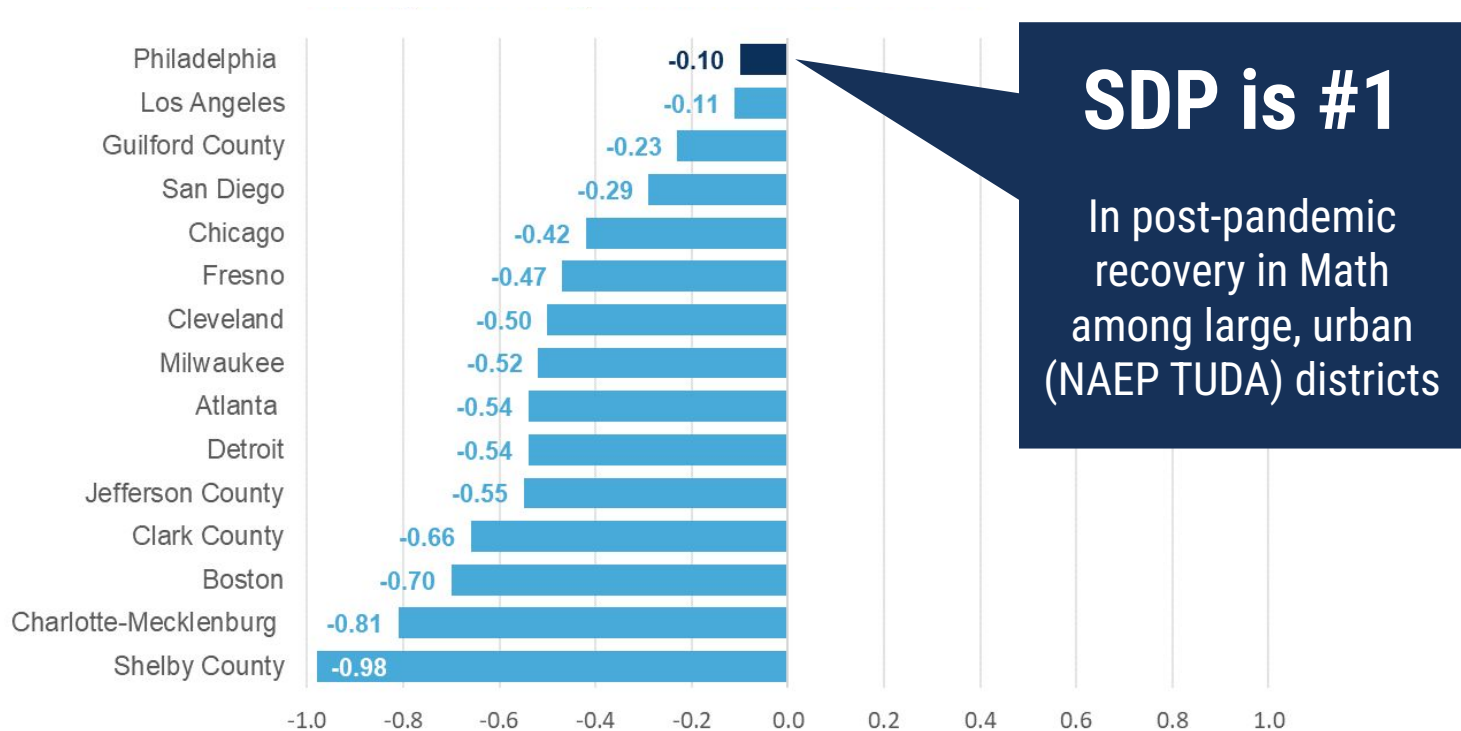


The School District of Philadelphia was at the top of big-city school districts in academic recovery post pandemic, according to new research out of Harvard and Stanford Universities.

Erin Blewett

Education Recovery Scorecard

Change in Average Math Scores from 2019-2023 (National Comparisons)



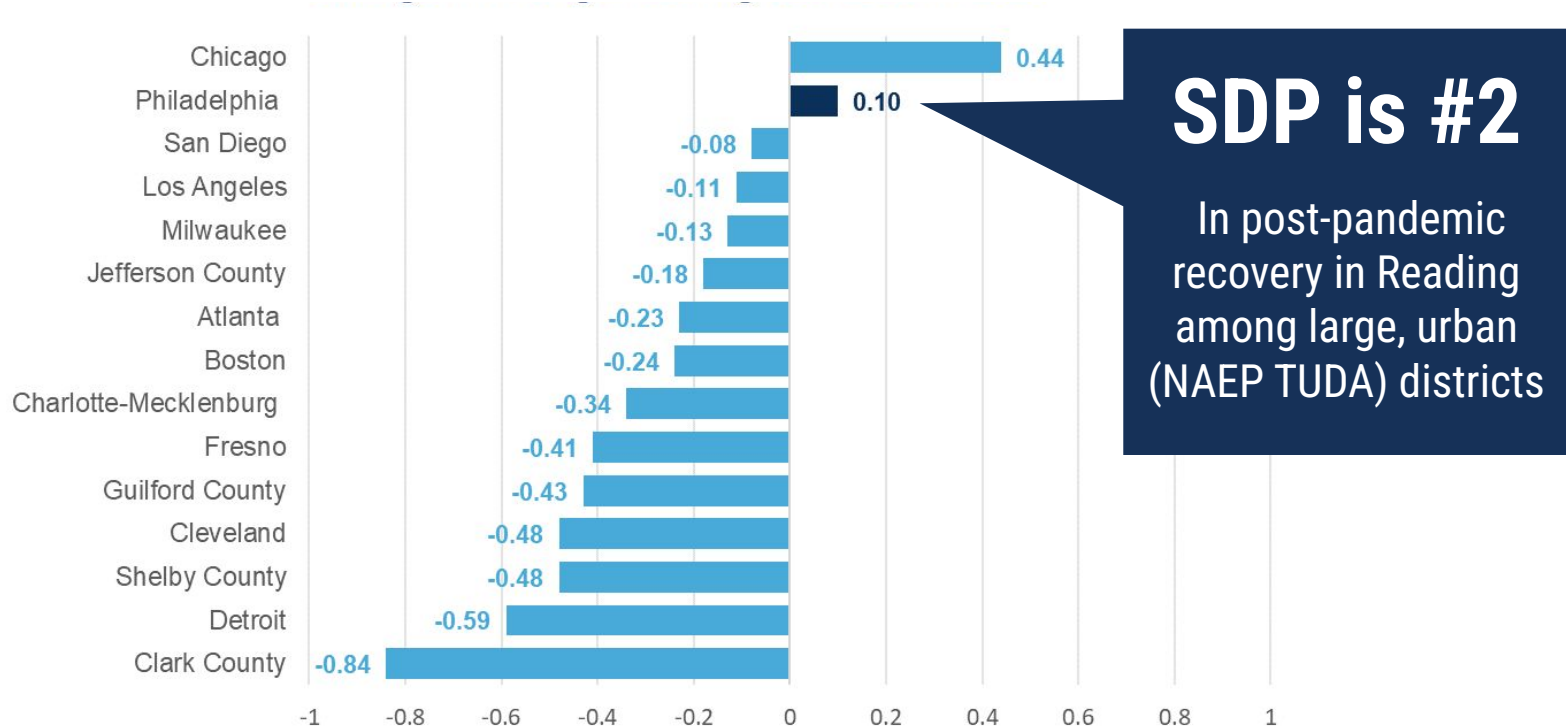
SDP is #1

In post-pandemic
recovery in Math
among large, urban
(NAEP TUDA) districts

Note: Of the 28 total districts participating in NAEP Trial Urban Districts in [2019](#) and [2022](#), 15 had available data for the 2019 through 2023 analysis. *Fresno participated in TUDA from 2009 until 2019. The Education Recovery Scorecard (<https://educationrecoverycard.org/>) included 30 states and represented 60 percent of the U.S. public school population from grades 3-8.

Education Recovery Scorecard

Change in Average Reading Scores from 2019-2023 (National Comparisons)



Note: Of the 28 total districts participating in NAEP Trial Urban Districts in 2019 and 2022, 15 had available data for the 2019 through 2023 analysis. *Fresno participated in TUDA from 2009 until 2019. The Education Recovery Scorecard (<https://educationrecoverycard.org/>) included 30 states and represented 60 percent of the U.S. public school population from grades 3-8.



FY2025 Budget Overview

PHILADELPHIA BERS



Budget Priorities

FY 2025 Budget Development Priorities



01

Protect school budgets.

02

Engage partners throughout the City.

03

Negotiate mutually-beneficial labor agreements that fairly compensate employees and help stabilize the system.

04

Implement the *Accelerate Philly* Strategic Plan towards achieving the Board of Education's *Goals and Guardrails*.

05

Enact fiscal-responsibility measures and advocate for additional funding to prevent a structural deficit.

FY 2025 Priority Investments

PRIORITY AREA 2

Partner with families and community

- Let's Talk Two-Way Communications
- Parent University

PRIORITY AREA 1

Improve safety and well-being
(physical, social-emotional, and environmental)

- Facility Improvements
- School Safety (Physical, Social-Emotional and Environmental)

PRIORITY AREA 3

Accelerate academic achievement

- Core Instructional Materials (ELA)
- CTE Job Training
- Extended-Day/Year-Round Schools
- High-Impact Tutoring



PRIORITY AREA 4

Recruit and retain diverse
and highly effective educators

- Black and Latino Male Educator Recruitment and Retention
- Teacher/Principal Recruitment and Retention

PRIORITY AREA 5

Deliver efficient, high-quality,
cost-effective operations

- Central Office Performance Evaluation System
- Project Management Culture

Prioritizing School Safety



Installing new weapons
detection technology



Installing new
security cameras



Continuing Safe Paths
Program



Expanding youth violence
reduction initiatives



FY 2025 Lump Sum Budget

FY 2025 - 2029 Five-Year Plan Overview

FY 2024:

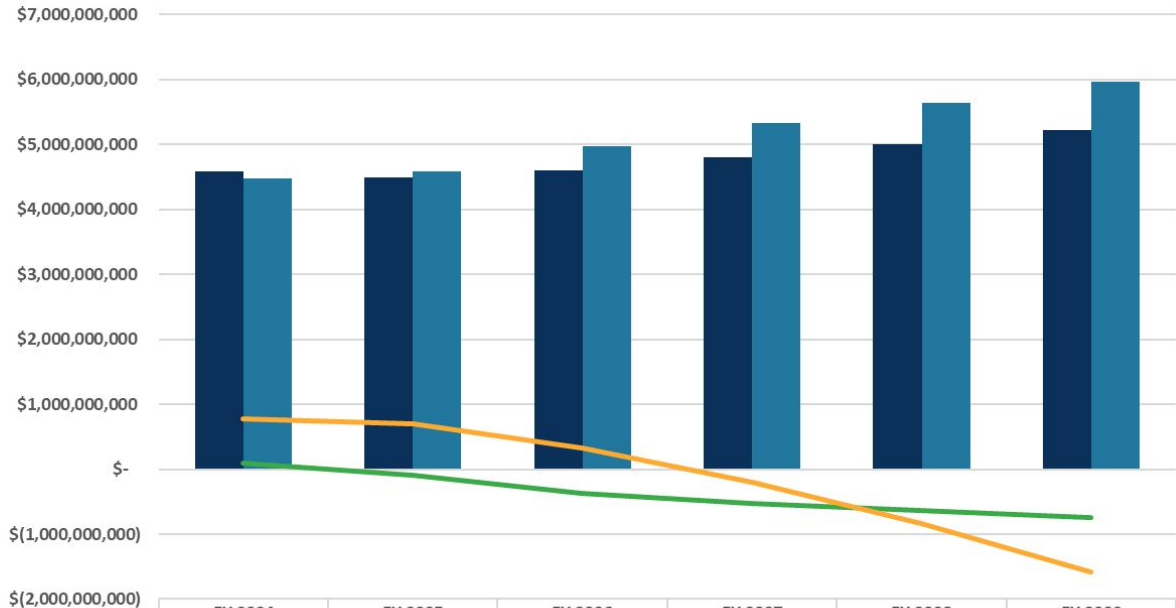
Will Add to Fund Balance as Previously Projected

FY 2025:

Requires \$87.8M in Use of Fund Balance and Passage of Governor/Mayor Proposals

FY 2026 and Beyond:

Will require continued State and City progress towards adequacy targets and sound fiscal practices to avoid structural deficit



	FY 2024 Projected	FY 2025 Projected	FY 2026 Projected	FY 2027 Projected	FY 2028 Projected	FY 2029 Projected
Revenues and Sources	\$4,579,695,596	\$4,492,813,596	\$4,596,012,812	\$4,794,528,576	\$5,003,803,423	\$5,218,335,603
Expenditures and Uses	\$4,479,543,079	\$4,580,585,361	\$4,965,790,134	\$5,320,527,076	\$5,644,719,785	\$5,963,554,227
Annual Surplus (Deficit)	\$100,152,517	\$(87,771,765)	\$(369,777,322)	\$(525,998,500)	\$(640,916,362)	\$(745,218,624)
Fund Balance	\$783,034,322	\$695,262,557	\$325,485,235	\$(200,513,264)	\$(841,429,627)	\$(1,586,648,251)

Notes: Excludes ARPA-funded Capital Project Revenues and Expenditures in FY 2025. Includes one-time PlanCon claims of \$45.0 Million in FY 2025.

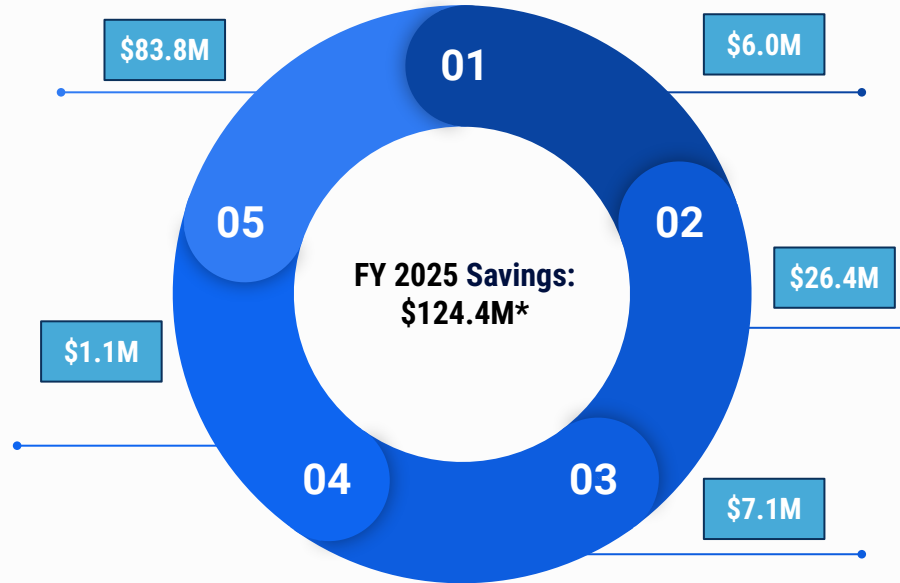
Fiscal Responsibility Measures

Change Estimates and Strategically Align Funds

Rightsizing all estimates, reserves and placeholders to achieve budgetary savings and aligning initiatives to less constrained funds (while complying with grant rules).

Identify Other Cost Savings

Reduce energy costs in 23 schools and discontinue contract with PA Convention Center for professional development.



Seek Private and Foundation Funding

Working with the Fund for the School District of Philadelphia to seek private and foundational support for critical *Accelerate Philly* initiatives.

Begin Data-Driven Program Evaluations

Review of programs to determine return on investment (ROI)

Analyze Central Office Budgets & Begin Modified Zero-Based-Budgeting

Review of vacant Central Office positions and non-personnel budget costs.

*Includes private funding and subject to change through final budget adoption.



ARPA-Funded School Allocations

Beginning in FY 2022, through the American Rescue Plan Act, schools received additional direct budget resources totalling \$49.8 million to help combat pandemic impacts on education.

In FY 2024, funding was used to support critical school-based positions:

- 129 Assistant Principals
- 110 Teachers (Including 16 Special Education Teachers)
- 35 School Climate Managers
- 26 Counselors
- 46 Student Climate Staff
- 15 Other School-Based Positions

\$49.8M

Investment to Maintain Funding

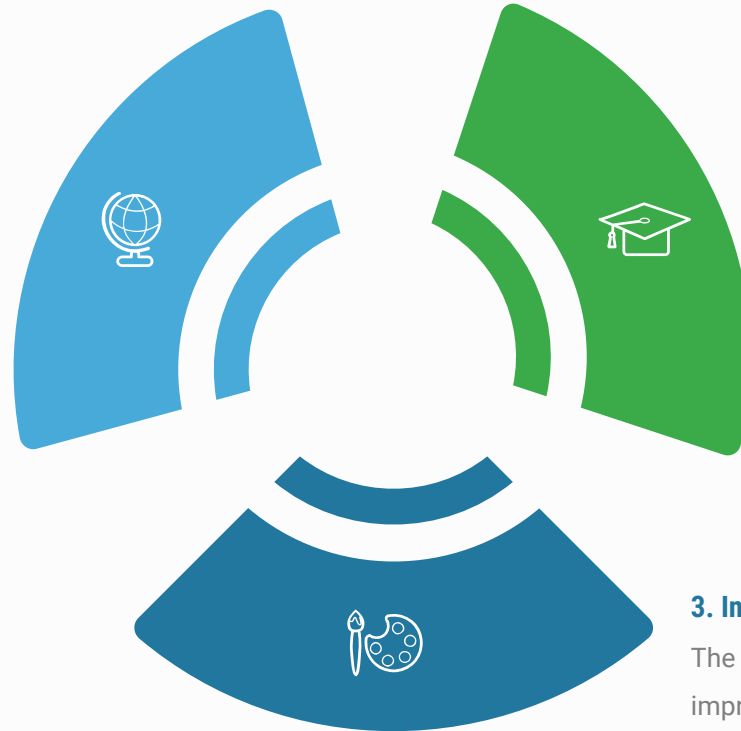
- One-year extension requiring continual revenue increases to maintain in future years
- Required for District to sustain recent academic progress
- Consistent with stakeholder engagement



Leveling Next Steps: Discontinue Leveling in SY 2024-25

1. Hire Pool of Qualified Teachers

Teachers could be assigned from the pool after the school year begins to schools with increasing enrollment as new positions are allotted.



2. Form a Summer Scheduling Workgroup

Convene weekly summer workgroup to review actual enrollment data. Workgroup will be led by the Deputy Superintendent of Academics and will include representatives from Academics, Special Education, Multilingual, Talent, ERA and Budget.

3. Improve Student Engagement Efforts

The District will work with the City of Philadelphia on improved engagement strategies including home visits.

Note: Though teacher transfers would not occur after August 15, school leaders maintain discretion to change assignments within their schools.



Facilities Update



Capital Improvement Plan Update



District Facility Investments Over Past 10 Years

Between 2013 and 2023 the District Invested \$1.72 billion in:

- Built **5 new school facilities** (*TM Peirce Elementary, Solis Cohen Elementary School, Northeast Community Propel Academy, Powel SLA Middle School, and West Philadelphia High School*):
- Completed **10 new school additions**;
- Completed **46 new classroom modernization projects**;
- Completed **lead paint assessments in 194 facilities**, and **certified 169 lead-safe schools**;
- Added **1,700 state-of-the-art hydration stations in every school**;
- **Installed humidity sensors** to monitor and proactively prevent mold in **31 targeted schools**;
- Conducted other deferred maintenance, systems upgrades, structural, energy efficiency and site improvement initiatives.



Amended FY 24 and Proposed FY 2025-30 CIP

The proposed Capital Improvement Plan allocates \$3.3 billion for FY 2024 - FY 2030, as follows:

- New Construction, \$766.9 million (*including Cassidy, Holme, and AMY @ James Martin*)
- Major Renovations, \$544.0 million
- HVAC, \$435.0 million
- Exterior Renovations, \$314.7 million
- Energy Performance Improvements, \$214.4 million
- Electrical, \$305.4 million
- New Additions, \$247.1 million
- Site Improvements, \$141.8 million
- Security Equipment, \$51.0 million
- Minor Renovations, \$48.4 million
- Other Projects, \$275.3 million



Facilities Planning Update

Historical Context:

School Closures and Lessons Learned

- **School Closures**

- Between 2012 and 2013, the **District closed 30 schools** to address a **\$1.35 billion budget deficit**.

- **Lessons Learned:**

- District **saved \$24 million annually**, largely from school-based personnel.¹
- Average **test scores decreased** for both displaced students and schools receiving displaced students.²
- **Student absences increased** significantly for displaced students.²

- **Application of Lessons Learned:**

- District should prioritize **student learning** while making use of **comprehensive data**, deep and transparent **community engagement**, and a focus on repurposing buildings to **support communities**.

¹ James Jack and John Sludden, Research for Action (2013). School Closings in Philadelphia. Retrieved from Education Resources Information Center

² Matthew P. Steinberg and John M. MacDonald, (2019). The effects of closing urban schools on students' academic and behavioral outcomes: Evidence from Philadelphia. Retrieved from Regional Science and Urban Economics, Volume 77

SDP Facilities Plan - An Eight Stage Process

Phase	Timeline	Deliverable	Status
Phase I	June 2022 - June 2023	Develop Strategic Plan	Complete
Phase II	June 2023 - September 2023	Develop RFP Process to Secure Data Strategy Vendor	Complete
Phase III	June 2023 - July 2023	Develop Academic Baseline Standards	Complete
Phase IV	June 2023 - December 2023	Develop a Swing Space Plan	Complete
Phase V	September 2023 - December 2023	Create a Data Planning Strategy	Complete
Phase VI	December 2023 - March 2024	Develop a Pilot Facilities Data Warehouse	Complete
Phase VII	March 2024 - December 2024	Develop a Comprehensive Facilities Data Warehouse	In Progress
Phase VIII	December 2024 - December 2026	Launch Facilities Plan Project Team	In Planning



Other District Updates





School Selection Update

School Selection Results

School Selection Applications Comparison

	22-23 SY As of 3/25/23	23-24 SY As of 3/8/24	Difference
Total Applications	67,933	68,078	+145
Total Applications Eligible for Lottery	46,771	52,093	+5,322
Total Applicants	16,496	16,852	+356
Total Accepted Offers	9,464	10,696	+1,232

**School Year 23-24 numbers are subject to change as the waitlist process is still open.*

**School Year 23-24 numbers are preliminary*

**Reflects all applications, not limited to criteria-based schools*

Enrollment Highlights

School Name	9th Grade Enrollment for SY 23-24	9th Grade Acceptances for SY 24-25	Difference (Student Enrollment)
Hill-Freedman HS	59	122	+63
Lankenau HS	31	84	+53
Motivation HS	19	71	+52
Philadelphia High School For Girls	88	186	+98
Saul High School	67	147	+80
SLA at Beeber	60	105	+45



Position & Staffing Update

Staffing Update

Position	Filled - April 2023	Filled - April 2024	Difference
Teachers	96.5% (8,321)	96.7% (8,468)	0.2% (147)
Counselors	95.9% (393)	98.1% (420)	2.2% (27)
Nurses	94.2% (221)	94.7% (223)	0.5% (2)
Food Service Workers	86.7% (747)	95.9% (914)	9.2% (167)
Student Climate Staff	93.3% (1,030)	94.2% (1,128)	0.9% (98)
Special Education Assistants	83.2% (2,137)	82.3% (2,623)	-0.9% (486)
<i>All School-Based Positions</i>	<i>91.2% (16,396)</i>	<i>91.9% (17,384)</i>	<i>0.7% (988)</i>



THE SCHOOL DISTRICT OF PHILADELPHIA

Thank you and Questions