



Budget Office

CITY OF PHILADELPHIA

May 18, 2021

The Honorable Darrell Clarke
City Council President
City Hall, Room 490
Philadelphia, PA 19107

Dear Council President Clarke,

This letter is in response to questions raised by Councilmembers during the FY22 Council Budget Hearing for the Budget Office on May 5, 2021. At this hearing, the following question was asked:

1. Councilmember Parker: From the mid-90's to now, there about 25,000 new jobs created. What percentage were white collar versus blue collar?

While the exact percentage of blue collar jobs by tax cuts is unknown, there remains little doubt that blue collar jobs, service jobs, and public jobs have changed since tax cuts were implemented. Below please find a summary of findings from an analysis of Total Full-Time and Part-Time Employment data from the Bureau of Economic Analysis, 1990-2019, prepared by Philadelphia Works, Inc.

The share of Philadelphia Employment attributed to Blue Collar industries decreased from approximately 23% in 1990 to 18% by 2000. A significant drop occurred between that year and 2001, when Blue collar employment fell to 14%. Following this time period, the year-over-year decrease slowed through 2003. At that point, it remained stable until the Great Recession. As of 2019, Blue Collar employment made up 13% of all Philadelphia employment. This represents a return to pre-Great Recession levels. The year-over-year trend in the share of Philadelphia employment attributed to Blue Collar industries between 1990 - 2019 closely mirrored that of the entire Southeastern PA region and the United States overall.

As a point of comparison, Blue Collar employment represented 31% of all US employment and 30% of all Southeastern PA employment in 1990. These regions' shares of Blue Collar employment fell to 29% and 27% respectively by 2000 and experienced a similar dip to that faced in Philadelphia between 2000 and 2001. In these regions as well, Blue Collar employment faced slower declines during the early 2000s before leveling out following the Great Recession. In 2019, Blue Collar employment represented 21% of all US employment and 18% of Southeastern PA employment.

Across all three regions, as Blue Collar employment trended downward or bounced slightly, Service employment experienced slow but consistent increases to its share of employment. In 2019, 75% of Philadelphia employment was attributed to Service jobs, while 73% of Southeastern PA employment and 66% of US employment was attributed to Service jobs. Appendix A shows several visual representations of employment and labor force participation across Philadelphia, Southeastern PA, and the US. The categorizations used in the charts are the "Blue Collar," "Service," and "Public" sectors. "Service" as an updated replacement of the term "White Collar." "Public" includes all local, state, and military employment. Lastly, all employment here is Non-farm.



Budget Office

CITY OF PHILADELPHIA

Non-farm is the measure of the number of workers in the U.S. excluding farm workers and workers in a handful of other job classifications.

2. Councilmember Jones: Provide the dollar amount in Police lawsuits over the past four years.

The table below shows Police indemnities from FY16 forward.

Fiscal Year	Indemnities (in \$s)
FY2016	\$12,807,676
FY2017	\$14,874,051
FY2018	\$21,880,475
FY2019	\$21,254,586
FY2020	\$16,175,422
FY2021 (YTD)	\$21,540,411

Please contact my office for further information.

Marisa G. Waxman, AICP
Budget Director
City of Philadelphia



Budget Office

CITY OF PHILADELPHIA

May 18, 2021

The Honorable Darrell Clarke
City Council President
City Hall, Room 490
Philadelphia, PA 19107

Dear Council President Clarke,

This letter is in response to questions raised by Councilmembers during the FY22 Council Budget Hearing for the Philadelphia Department of Prisons scheduled for May 12, 2021. At this hearing, the following questions were asked:


- **Councilmember Gauthier: What portion of the PDP budget is for recidivism?**

Response

For FY 21, PDP has budgeted \$2,942,457 for recidivism in the general fund. This amount includes staffing and services provided by the Office of Reentry Partnership (ORP). For FY 21, recidivism services are approximately 1.3% of the total PDP budget for FY 21.

For FY 22, PDP has budgeted \$2,649,842 for recidivism in the general fund. This amount includes staffing and contracted services provided by the Office of Reentry Partnership. For FY 22, recidivism services are approximately 1.1 % of the total PDP budget for FY 21.

Thank you for the opportunity to provide a response.

Sincerely,

Blanche Carney, MSS
Commissioner



Budget Office

CITY OF PHILADELPHIA

May 18, 2021

The Honorable Darrell Clarke
City Council President
City Hall, Room 490
Philadelphia, PA 19107

Dear Council President Clarke,

This letter is in response to questions raised by Councilmember Thomas after the FY22 Council Budget Hearing for the Philadelphia Water Department on May 3, 2021. The following questions were asked:

1. Will there be money budgeted for updates to outdated, inadequate Department facilities?

The Department budgets for updating its outdated or inadequate Water Department facilities in its capital budget. For FY 2022 the Improvements to Facilities line item in the capital budget is \$250M, of which the Department expects to encumber 90% or more in FY 2022. Any amount not encumbered in FY 2022 will be encumbered in the following fiscal year, FY 2023.

2. Will the upcoming budget allow for more hiring with regards to the needed and currently unfilled positions throughout the Department?

Yes, hiring for needed and unfilled positions are provided for in the budget. It is anticipated that all positions will not be filled on day one of the fiscal year, thus, vacancy savings provisions are made in the budget to account for hiring pattern.

3. Is there adequate Money in the budget to assure that necessary amounts of PPE and facility sanitizing needs/requirements are provided throughout the department?

Yes, the Department believes it has sufficient funding for these items.

4. Will the upcoming budget allow for more training for our trade's workers? (Electrical, Mechanical, HVAC, electronics/Instrumentation)

Most of this type of training typically is part of our Apprentice Program although we do offer specific training opportunities in these areas usually at the request of managers.



Budget Office

CITY OF PHILADELPHIA

5. What is the practicality of using more of the departments' workforce to complete work the department employees are qualified to do like Department grass cutting which has been contracted, etc...?

PWD is always looking at ways to have employees perform necessary work. The Green Stormwater Operations (GSO) is working on increasing staffing and equipment to reduce the need for contract work, but that effort takes time to accumulate the equipment, hire and train the staff and assess the needs of an ever-increasing number of Stormwater Management Practices (SMPs). Staffing and equipment shortfalls have caused the need to increase our contract for CCTV work. Overtime efforts do not overcome this need. We do not own all the specialized equipment needed to manage some of our grounds. For example, steep slopes require machines and expertise that we do not currently possess. We are using our existing equipment and employees to manage several parcels and have increased overtime usage to accomplish this. We are also investigating alternative equipment (robotic slope mowers) to reduce the need for contract work.

Please contact my office for further information.

Randy Hayman, Esq.
Commissioner and CEO
Philadelphia Water Department



Budget Office

CITY OF PHILADELPHIA

May 18, 2021

The Honorable Darrell Clarke
City Council President
City Hall, Room 490
Philadelphia, PA 19107

Dear Council President Clarke,

This letter is in response to questions raised by Councilmembers during the FY22 Council Budget Hearing for the Managing Director's Office scheduled for May 10, 2021. At this hearing, the following questions were asked:

1. Councilmember Parker: Why can't an organization get funds from both the Cultural Fund and Activities Fund?

The Philadelphia Cultural Fund allows Activities Fund recipients to receive Cultural Fund grants. However, the Activities Fund disqualifies Cultural Fund grantees from applying to them. This policy was reviewed by the Activities Fund board in March 2019, and they elected to uphold the rule. We continue to work with grantees of both Funds to ensure the sustainability of community-based programs.

2. Councilmember Domb: How many people are going door to door in high need areas to spread vaccination information? What is the budget?

In March of 2021, Philly Counts was sub-granted from PDPH \$2.2M to run a community engagement campaign throughout the City of Philadelphia, and particularly in Philadelphia's most vulnerable communities, utilizing an active trusted messenger program, an Ambassador program, and community organizing strategies to develop neighborhood specific plans to increase vaccination rates through the city. The community organizing work will result in 600,000 phone calls, 1,000,000 texts, 960 events, and 54 Neighborhood Ambassadors. The combined efforts of this work will result in 200,000 interactions aimed at increasing vaccination rates. We also have developed a plan for door-to-door canvass effort which will have canvassers knock on doors in priority census tracts, share information about the vaccine, and help people identify walk up opportunities or make appointments.

3. Councilmember Quinones Sanchez: Please itemize all the funding that are going to Kensington. Send something over in writing.

Councilmember Sanchez sent a more detailed request following the hearing, and we are working to compile for Monday.



Budget Office

CITY OF PHILADELPHIA

- 4. Councilmember Brooks: On Page 27 of the MDO budget detail document, there is a line item of \$1,947,849 with a description of "Unallowable OIG Audit GR7018014". Can you explain what this approximate \$2M in funds was used for?**

The Class 800 entries in question were performed to reconcile and close out a \$50M U.S. Department of Justice grant for 2016 DNC Convention security expenses, which was audited by the U.S. Department of Justice Inspector General (OIG). The audit officially concluded in calendar year 2020, and it was resolved as the City accepted the following OIG finding:

“To remedy a questioned cost of \$61,500 related to an unallowable subcontract that was executed by the DNC Host Committee.”

The City performed two journal entries: the first entry was to de-obligate the \$61,500 unallowable expense from the grant. The second entry was performed to reconcile actual eligible grant expenditures, reducing expenses in Grants Fund by transferring them to the General Fund. These two Journal Entries reduced the City’s Accounts Receivable balance against the grant index code by \$1.9 million to \$3.510 million.

Please reach out to my office for further questions.

Tumar Alexander

Managing Director, City of Philadelphia



Budget Office

CITY OF PHILADELPHIA

May 18, 2021

The Honorable Darrell Clarke
City Council President
City Hall, Room 490
Philadelphia, PA 19107

Dear Council President Clarke,

This letter is in response to questions raised by council members during the FY22 Council Budget Hearing for the Philadelphia Fire Department that occurred on May 12, 2021. At this hearing, the following questions were asked:

- 1. Council President Clarke: What is your specific strategy for advertising positions with your department for communities of color to better reflect the demographics of the city?**

The Philadelphia Fire Department (PFD) has worked and continues to work on several strategies to recruit diverse candidates for open positions with the goal for the PFD to better reflect the demographics of the City of Philadelphia.

First, over the past several years, the PFD augmented its small and busy recruitment staff with additional personnel that not only brings additional diversity in terms of demographics, but also diversity in experience (for example, adding EMS providers that lead efforts in recruiting for those positions). Second, PFD Recruitment has recently led and managed several community programs, specifically around emergency medical services training, with a goal of attracting and training local community members for in-demand and well-paying EMS jobs. Third, with the recent addition of staff and a new office location, the PFD's Fire Explorer program – which had been coordinated out of the Philadelphia Fire Academy – is now physically located with PFD Recruitment in addition to being managed by PFD Recruitment. The Fire Explorer program serves as a great way to stir interest among youth around public safety positions.

PFD Recruitment continues to participate in traditional job recruitment efforts by participating in various job fairs, community events, and visits to high schools and post-secondary schools, it is also branching out in other ways. PFD Recruitment spotlights application periods for open positions on the PFD's monthly radio show on WURD, utilizes social media (e.g., Instagram, Twitter, Facebook) and networks with other City departments to ensure our partner departments amplify the message, has used traditional billboards as well as digital posters on bus stops and LinkPHL kiosks to highlight open application periods. Of note, traditional recruitment efforts have been made far more difficult this past year with the COVID-19 pandemic crisis, but PFD Recruitment pivoted to online formats as quickly as possible as they became available.

Job interest forms represent another traditional recruitment effort that PFD Recruitment has sought to modernize and put to different use. Fire service paramedic positions are announced on a regular basis throughout the year, and firefighter positions are typically announced once every two years. In between application periods, PFD Recruitment gathers contact information for people interested in being notified as



Budget Office

CITY OF PHILADELPHIA

new application periods open. PFD Recruitment has recently partnered with the department’s business analytics team to map out the locations of people interested in PFD positions and will use this information for future outreach efforts, particularly with the intention of targeting underrepresented communities.

Finally, PFD Recruitment is most excited about its new home at 7800 Ogontz Avenue. After several years of being tucked in a high-rise office location that is not very accessible to the public, this space represents a new day for PFD Recruitment. The site is accessible to the public and welcoming to walk-ins; provides ample space for community training and/or engagement programs; and extends PFD reach into a community that historically had minimal PFD presence. Our PFD Recruitment unit is thrilled to stretch their proverbial wings and begin working on new projects to engage the community and attract new, diverse, and vibrant candidates for PFD positions.

And, while PFD Recruitment is tasked with leading major recruitment efforts, there are a number of activities the PFD sponsors or leads that result in informal recruitment. PFD initiated, and now co-sponsors, an annual Women in Public Safety Day that not only highlights women in public safety positions but also engages young women and girls to showcase career opportunities in public safety. PFD is proud to state that it exceeds the national average of women in fire departments (12% in PFD compared to 3% nationally) but we strive for 51%. PFD had also held the annual Joyce Craig Summer Camp program catered to youth, and particular young girls, aged 13 to 17, to teach them what it is like to work in fire suppression or emergency medical services jobs. Lastly, the PFD continues to partner with the Randolph Skills Academy and the School District of Philadelphia to provide fire suppression and EMS instruction to high school students.

2. Councilmember Parker: Re: Fire services EMT position: how many of these positions are there now? Do you know what percentage of them that are minorities?

There are currently 111 Fire Service EMT or Fire Service EMT-Advanced positions filled. The table below provides the demographics for these positions.

Race/Ethnicity of FSEMT and FSEMT-A As of 5/17/21		
Race	Number	Percentage of Total
Black or African American	57	51%
White or Caucasian	34	31%
Hispanic or Latino	19	17%
Asian American or Pacific Islander	1	1%
Total	111	100%



Budget Office

CITY OF PHILADELPHIA

3. Councilmember Gauthier: Re: Demographics of the last five classes in terms of race and ethnicity.

Demographics of Last Five Cadet Classes in Terms of Race and Ethnicity						
<i>Firefighter Class 194, 195 and 195A, 196, 197, 198</i>						
<i>Fire Service Paramedic Class 35, 36, 37, 38, 39</i>						
	Firefighter		Fire Service Paramedic		Total Graduated Cadets	
	Number	%	Number	%	Number	%
Black or African-American	114	29%	11	17%	125	27%
Female	16	4%	2	3%	18	4%
Male	98	25%	9	14%	107	23%
Hispanic or Latino	51	13%	4	6%	55	12%
Female	11	3%	1	2%	12	3%
Male	40	10%	3	5%	43	9%
Asian-American or Pacific Islander	12	3%	1	2%	13	3%
Female	0	0%		0%	0	0%
Male	12	3%	1	2%	13	3%
White	214	54%	48	74%	262	57%
Female	15	4%	12	18%	27	6%
Male	199	50%	36	55%	235	51%
Two or More Race	6	2%	1	2%	7	2%
Female	0	0%	1	2%	1	0%
Male	6	2%	0	0%	6	1%
Total	397	100%	65	100%	462	100%

Note: The above represents the cadets who graduated from their respective classes and not all candidates hired for each of the past five classes.

4. Councilmember Brooks: Of the 12 new PFD hires, 75% are white. Were any of them women?

Of the 12 new hires from 7/1/20 to 12/31/20, two were women. One of the two new hires after 1/1/21, is a woman.

Please do not hesitate to contact our colleagues in the Budget Office or me directly if you have further questions.

In service,

Adam K. Thiel, Fire Commissioner
City of Philadelphia



Budget Office

CITY OF PHILADELPHIA

May 18, 2021

The Honorable Darrell Clarke
City Council President
City Hall, Room 490
Philadelphia, PA 19107

Dear Council President Clarke,

This letter is in response to questions raised by Councilmembers during the FY22 Council Budget Hearing for the Department Office of Transportation, Infrastructure, and Sustainability (oTIS) scheduled for May 10, 2021. At this hearing, the following questions were asked:

- **Councilmember Thomas: Vision Zero investments - can you send over a list of the 12% of roads that cause accidents in the city?**

The Vision Zero [capital plan](#) directs all project-based work around the city.

The High Injury Network in the city is owned and maintained by the following sources:

- State - 200 miles (~ 59%)
- City (Streets + Fairmount) - 66 miles (~19%)
- FAM (Federal Aid for Municipalities – City streets eligible for Federal funds) - 75 miles (~22%)

Appendix B lists all the streets on the High Injury Network (HIN) in the city. A map showing the VZ High Injury Network can be viewed [here](#). Additionally, a project map showing completed and future improvements around the city can be found [here](#).

In Philadelphia, 148 out of 222 Hit and Run crashes (from 2015 to 2019) occurred on the HIN or 66% of Hit and Run crashes were on the HIN. For context, there were 1158 Killed or Severely Injured (KSI) crashes on the HIN over the last five years. 12% of KSI were hit and run crashes on the HIN.

Please contact my office for further information.

Mike Carroll, P.E.
Deputy Managing Director, City of Philadelphia



Budget Office

CITY OF PHILADELPHIA

May 18, 2021

The Honorable Darrell Clarke
City Council President
City Hall, Room 490
Philadelphia, PA 19107

Dear Council President Clarke,

This letter is in response to questions raised by Councilmembers during the FY22 Council Budget Hearing for the Department of Parks and Recreation scheduled for May 10, 2021. At this hearing, the following questions were asked:

- **Councilmember Jones:** Provide the number of positions in the skilled trades positions under the direction of Frank Fabey for capital improvements and repairs that are funded by the beverage tax.

The table below shows the number of skilled trades positions under Frank Fabey’s direction.

Trades as of March 30	
Budgeted Trades Positions	103
Filled	78
Vacancies	25
Vacancy Rate	24%

A 20% reduction in the FY21 budget resulted in the elimination of 15 skilled trades positions, with nine positions funded by the Philadelphia Beverage Tax that were also eliminated.

Currently, 28 budgeted skilled trades positions are funded by the Beverage Tax and 16 of these positions are filled. However, these positions are currently working on basic maintenance projects and summer prep for the Department. It is difficult to have the limited skilled trades staff complete Rebuild projects and capital specials, with a 24% vacancy rate in these positions.

Please contact my office for further information.

Kathryn Ott Lovell
Commissioner, Philadelphia Parks and Recreation



Budget Office

CITY OF PHILADELPHIA

May 18, 2021

The Honorable Darrell Clarke
City Council President
City Hall, Room 490
Philadelphia, PA 19107

Dear Council President Clarke,

This letter is in response to questions raised by Councilmembers during the FY22 Council Budget Hearing for the Department of Planning and Development on May 12, 2021. At this hearing, the following questions were asked:

1. **Councilmember Gilmore-Richardson: Related to Group of Attorneys/Advisory Committee - Can you talk about how much investment we have made in tangled titles and deeds and what the proposed amount is this year?**

Since 2003, DHCD has invested approximately \$2,678,500 to contract with VIP and other non-profit partners to assist low-income homeowners with estate planning and to clear title to their property. Approximately 3,000 titles have been cleared over the last 18 years. The budget this year is \$565,000 and the proposed FY22 is \$565,000.

2. **Councilmember Gilmore-Richardson: What is the composition of the tangled titles advisory committee?**

At present, the Tangled Title Fund Committee has 7 members and 1 administrator. Six of the members are white and 1 is black and the administrator is mixed-race (Asian, Hispanic and white). The committee members are chosen by VIP and consist of legal aid attorneys, private practitioners, and a financial literacy program director. Committee members approve nearly every application submitted.

Please contact my office for further information.

Anne Fadullon
Deputy Mayor, City of Philadelphia



Budget Office

CITY OF PHILADELPHIA

May 18, 2021

The Honorable Darrell Clarke
City Council President
City Hall, Room 490
Philadelphia, PA 19107

Dear Council President Clarke,

This letter is in response to questions raised by Councilmembers during the FY22 Council Budget Hearing for the Office of the Chief Administrative Officer scheduled for May 10, 2021. At this hearing, the following questions were asked:

- 1. Council President Clarke: Why is the projected M/W/DSBE participation rate expected to decrease from FY21 to FY22 (31% to 30%) – shouldn't the goal be to consistently improve?**

The CAO endeavors to consistently improve upon our annual M/W/DSBE participation; however, the FY22 participation projection was based on a reduction in Class 200 funds and elimination of some programs and contracting opportunities. CAO has very few contracts generally so the elimination of any contracting opportunities can negatively impact participation. The referenced projected participation rate does not account for the addition of the Operations Transformation Fund in FY22, an initiative added later in the budgetary process. As a result, CAO expects to exceed the previously projected participation rate.

- 2. Councilmember Gilmore-Richardson: Can you provide the number of City employees that are going to retire in the next five years?**

Please see below data on Employees Eligible to Retire over the next five years:

Within 1 Year: 6,215
Within 2 Years: 6,943
Within 3 Years: 7,765
Within 4 Years: 8,587
Within 5 Years: 9,386

Please contact my office for further information.

Stephanie Tipton
Chief Administrative Officer
City of Philadelphia



Budget Office

CITY OF PHILADELPHIA

May 18, 2021

The Honorable Darrell Clarke
City Council President
City Hall, Room 490
Philadelphia, PA 19107

Dear Council President Clarke,

This letter is in response to questions raised by Councilmembers during the FY22 Council Budget Hearing for the Office of Innovation and Technology scheduled for May 10, 2021. At this hearing, the following question was asked:

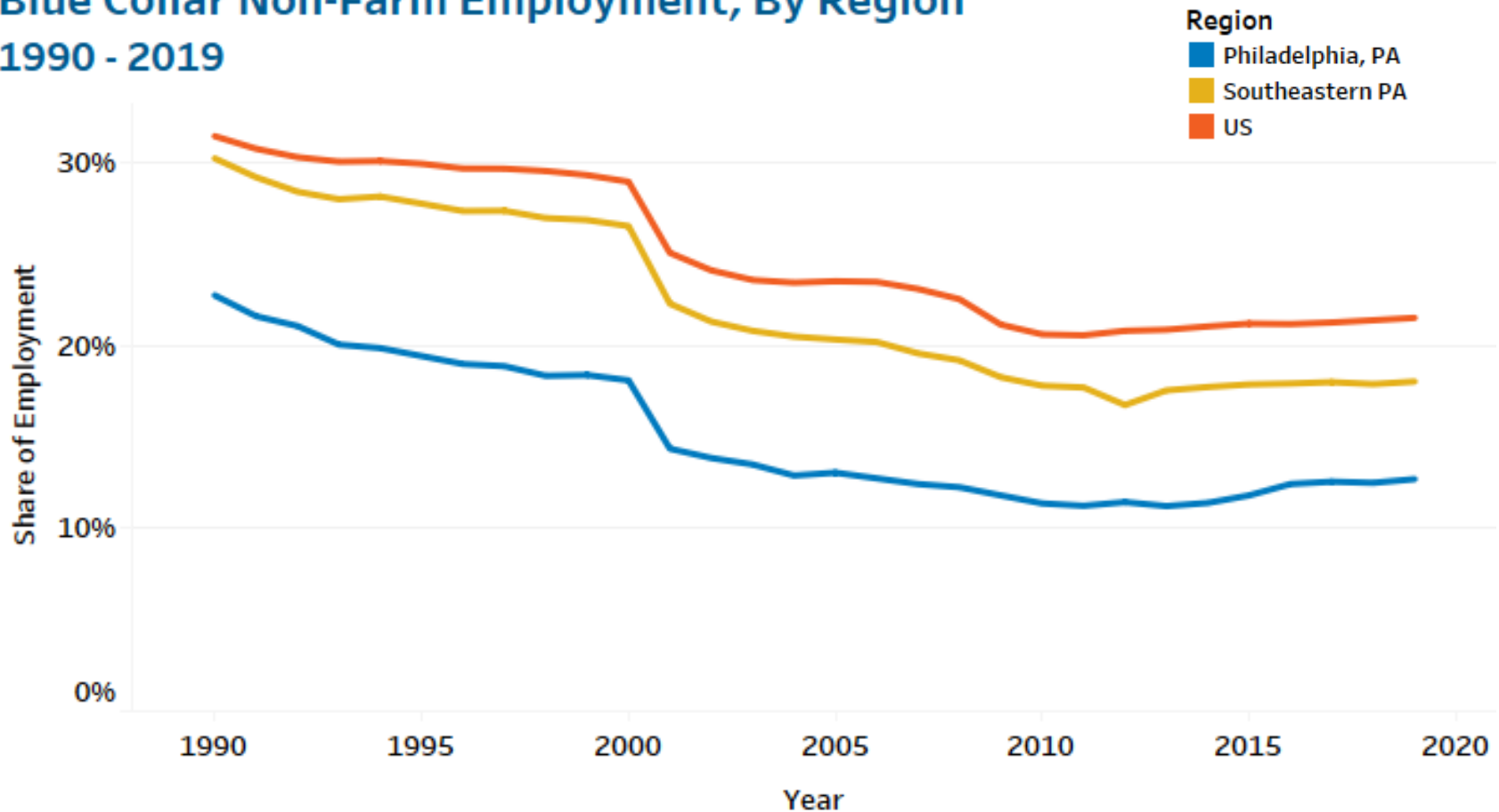
- **Councilmember Johnson: What is the implementation status of Bill #200541?**

The Office of Innovation and Technology (OIT) and the Mayor's Office convened meetings with departments supporting boards and commissions to determine the current state of need for guidance and existing means in place for posting recordings for public access by boards and commissions. The outcome was the preparation of a thorough set of guidelines for the departments to follow for recording virtual and in-person meetings of boards and commissions and for posting a video or audio file for public access. These guidelines are available from the City's intranet site. In addition, OIT has setup a YouTube channel where video or audio recordings may be posted by the departments supporting their respective board or commission. This link can be found [here](#). Boards or commissions that have existing processes in place to post recordings, to their respective phila.gov websites for public access, will continue to do so.

Please contact my office for further information.

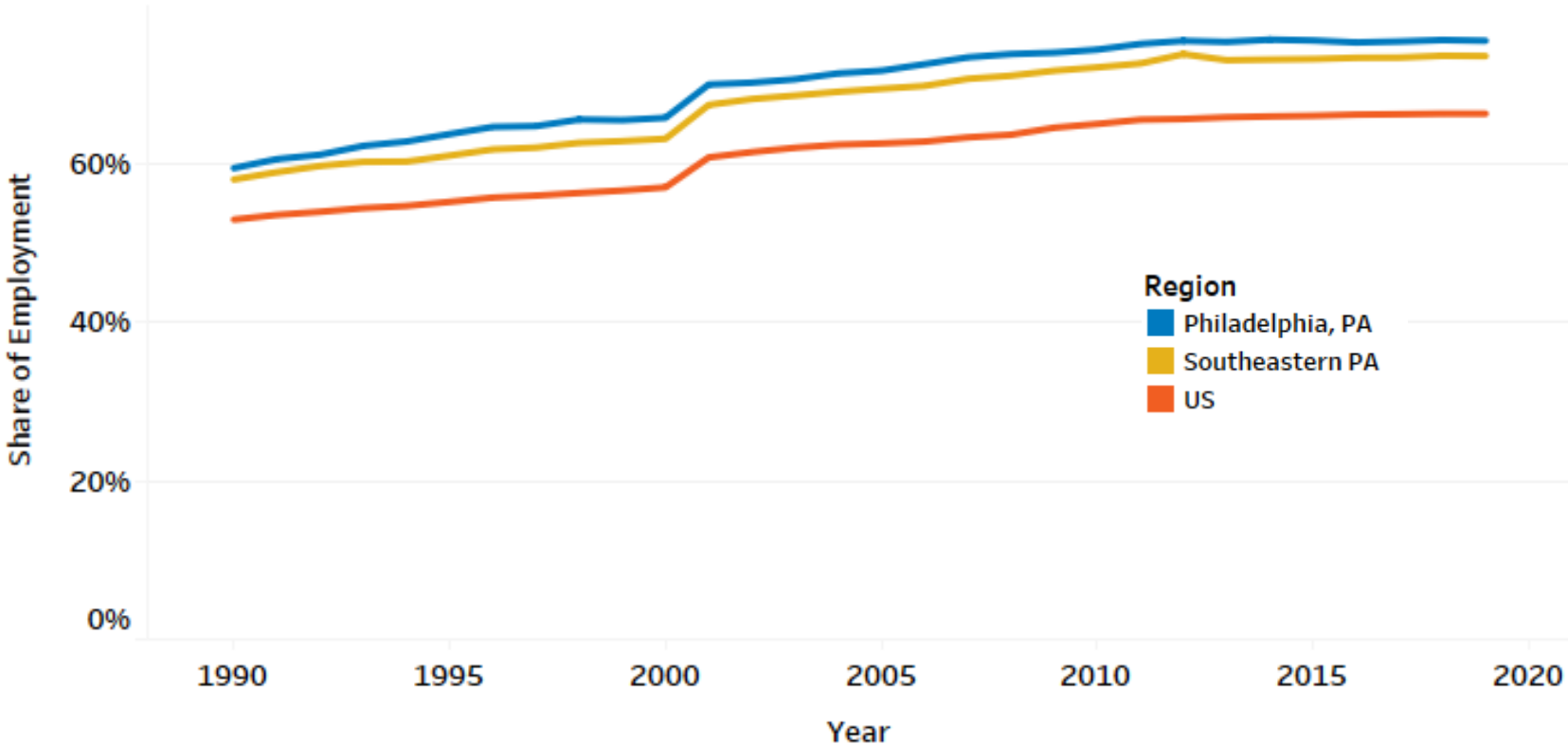
Mark Wheeler
Chief Information Officer
City of Philadelphia

Blue Collar Non-Farm Employment, By Region 1990 - 2019



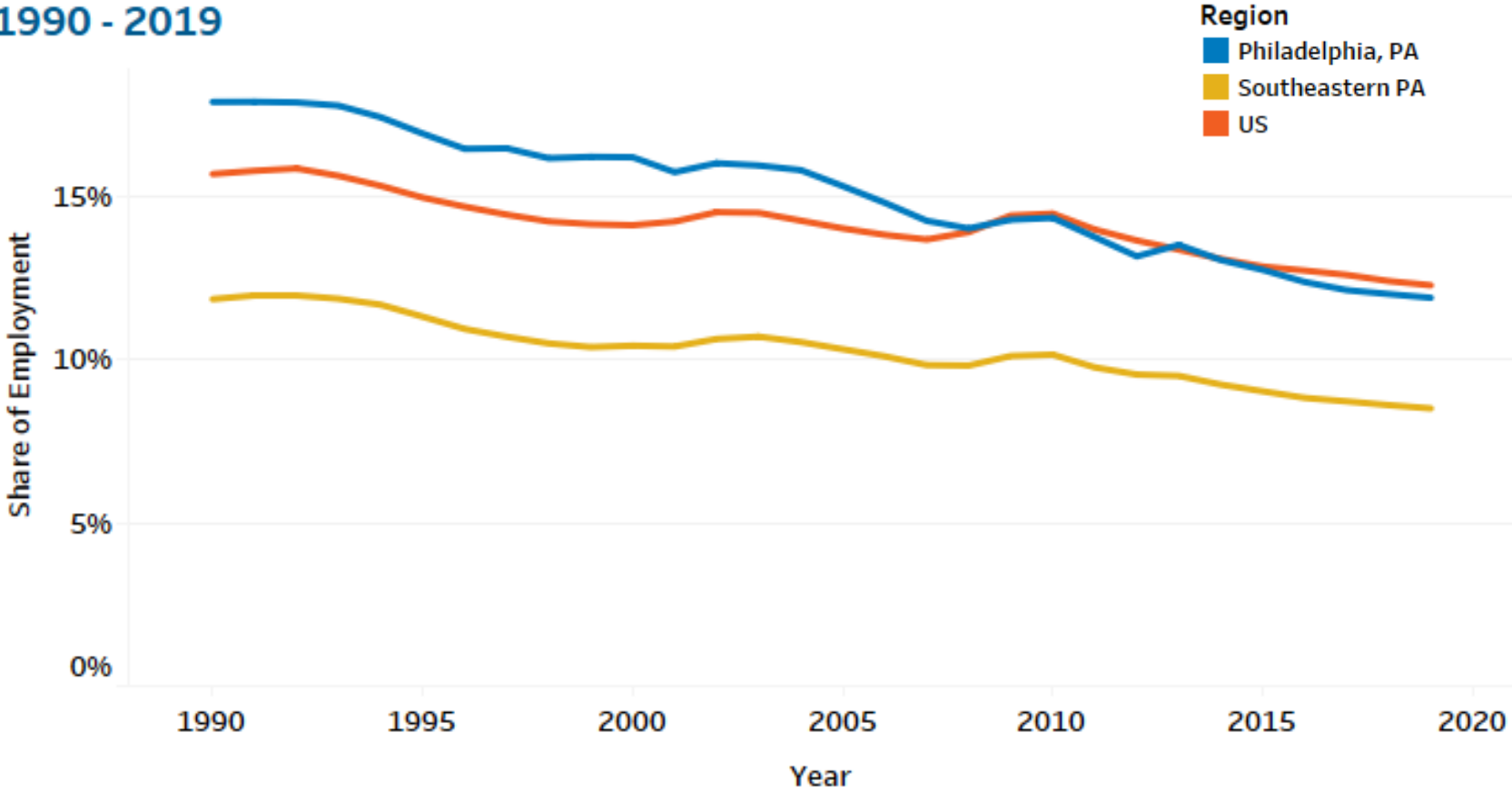
Source: Philadelphia Works, Inc. analysis of Total Full-Time and Part-Time Employment data from the Bureau of Economic Analysis, 1990 - 2019.

Services Non-Farm Employment, By Region 1990 - 2019



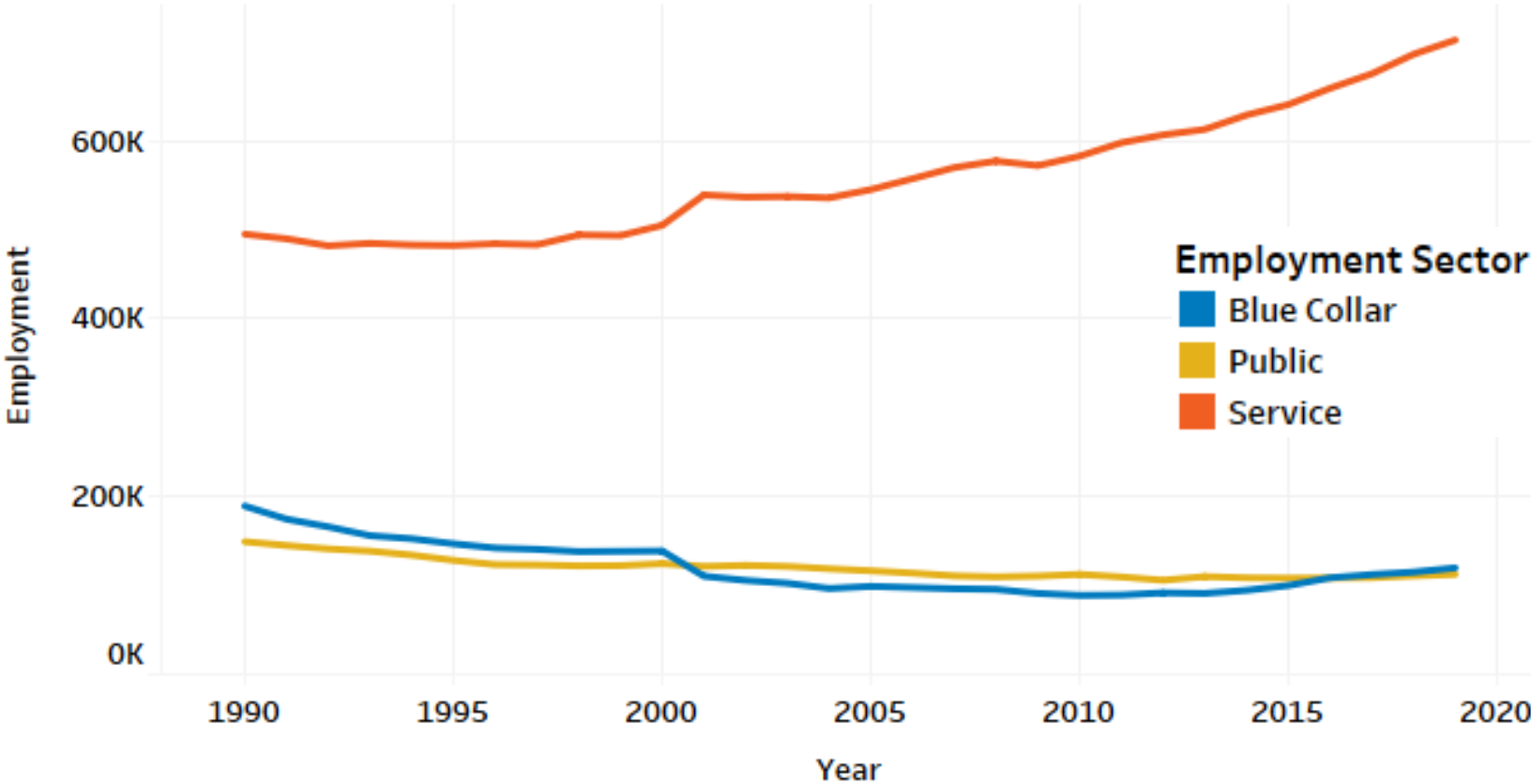
Source: Philadelphia Works, Inc. analysis of Total Full-Time and Part-Time Employment data from the Bureau of Economic Analysis, 1990 - 2019.

Public Non-Farm Employment, By Region 1990 - 2019



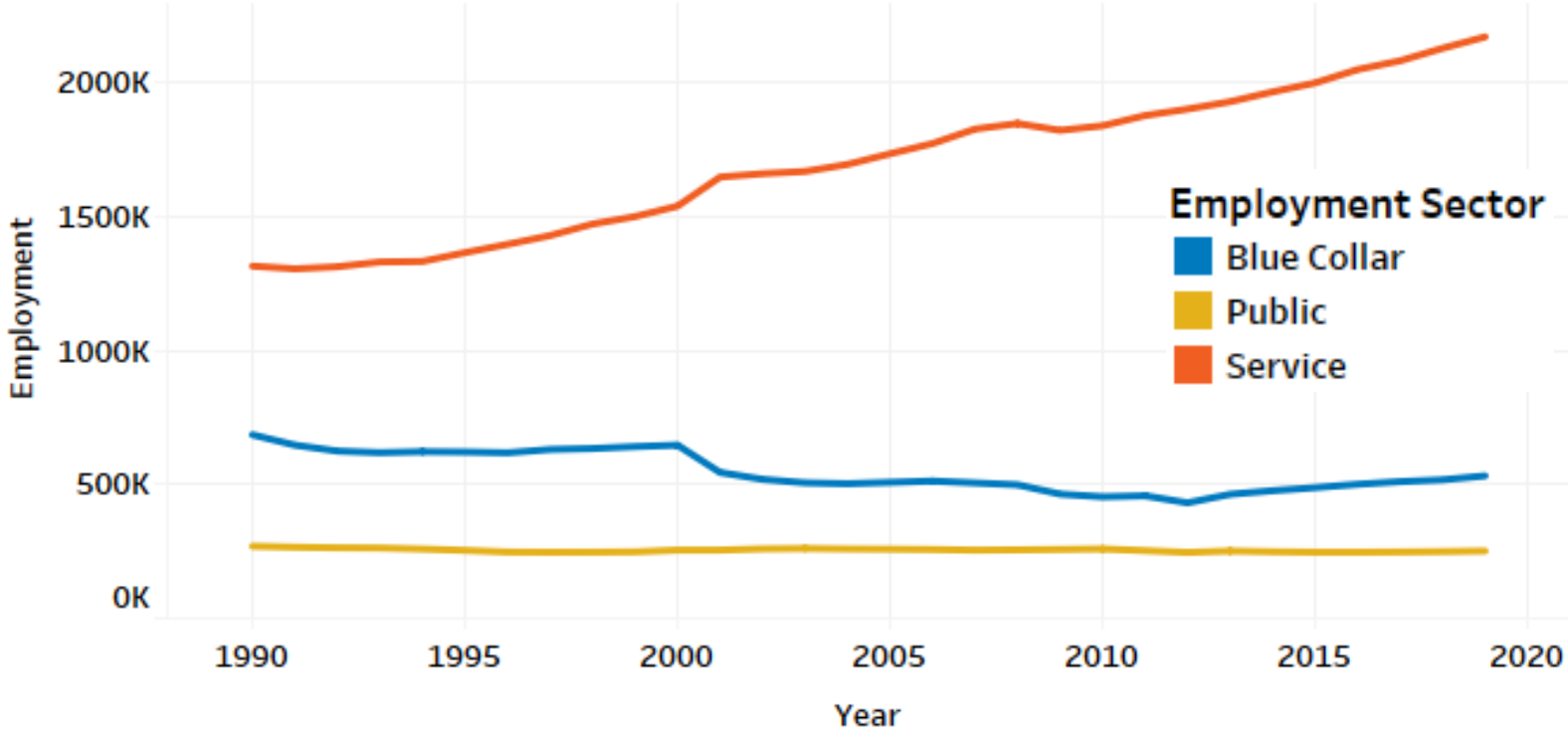
Source: Philadelphia Works, Inc. analysis of Total Full-Time and Part-Time Employment data from the Bureau of Economic Analysis, 1990 - 2019.

Philadelphia Non-Farm Employment By Sector 1990 - 2019



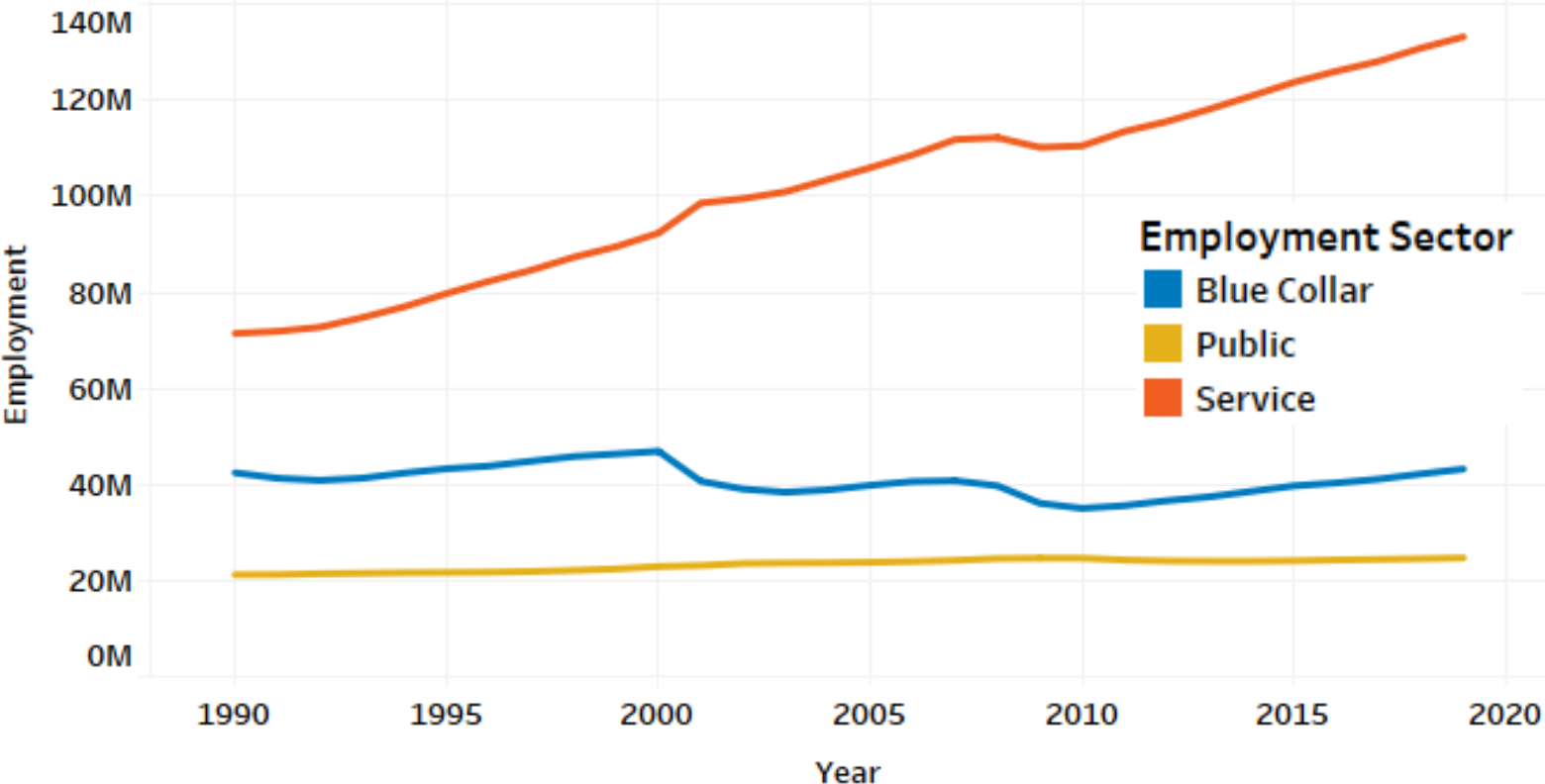
Source: Philadelphia Works, Inc. analysis of Total Full-Time and Part-Time Employment data from the Bureau of Economic Analysis, 1990 - 2019.

Non-Farm Employment Across Southeastern Pennsylvania, By Sector 1990 - 2019



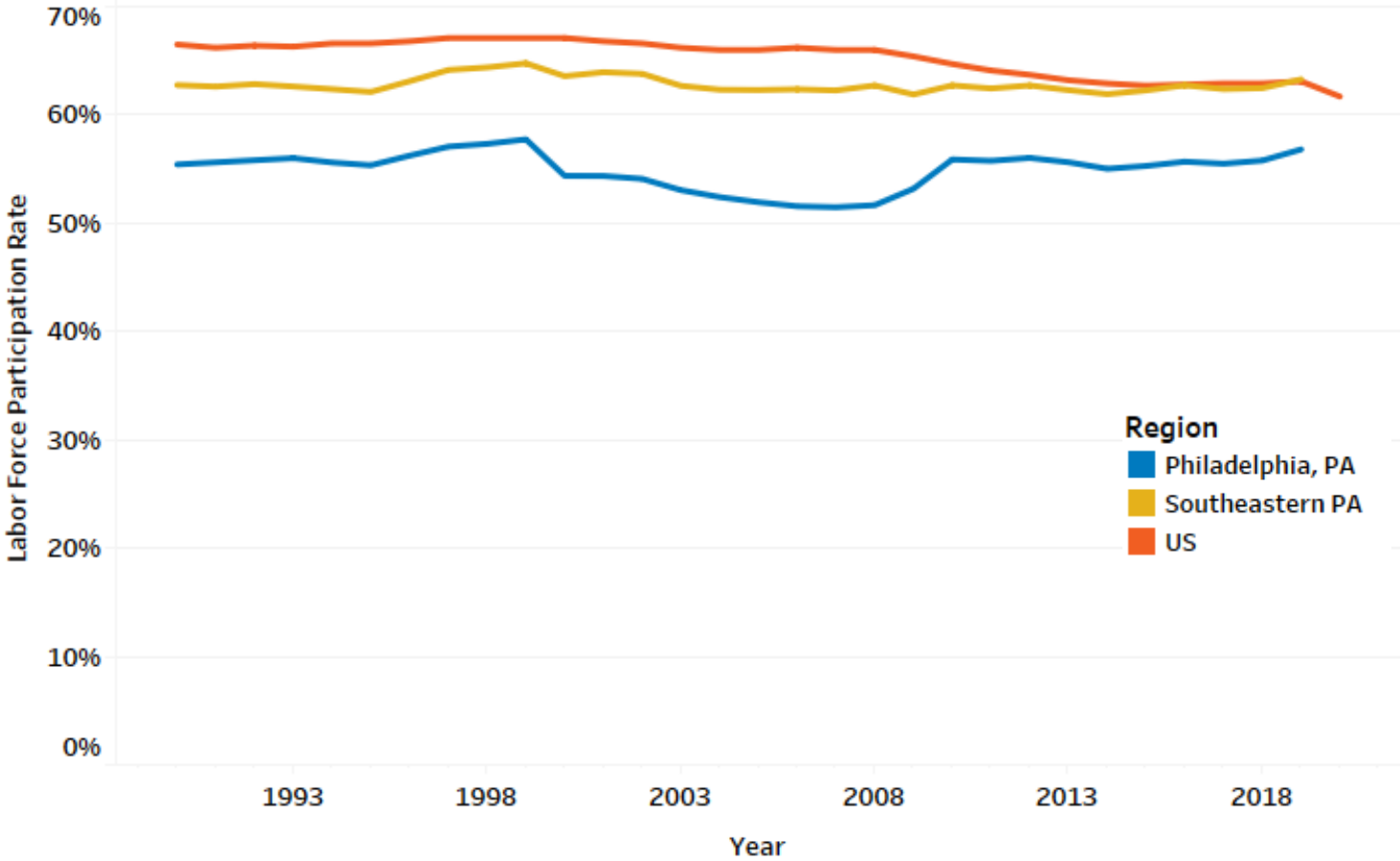
Source: Philadelphia Works, Inc. analysis of Total Full-Time and Part-Time Employment data from the Bureau of Economic Analysis, 1990 - 2019.

United States Non-Farm Employment, By Sector 1990 - 2019



Source: Philadelphia Works, Inc. analysis of Total Full-Time and Part-Time Employment data from the Bureau of Economic Analysis, 1990 - 2019.

Labor Force Participation By Region 1990 - 2019



Source: Philadelphia Works, Inc. analysis of population and labor force data from the Census Bureau and the Bureau of Economic Analysis, 1990 - 2019.

APPENDIX B

Intersections on High Injury Networks

STREET NAME	LENGTH (MILES)	TO (INTERSECTION)	FROM (INTERSECTION)
10TH ST	0.78	N 10TH ST & BRANDYWINE ST	S 10TH ST & DE GRAY ST
11TH ST	0.71	N 11TH ST & DIAMOND ST	N 11TH ST & MASTER ST
11TH ST	0.85	N 11TH ST & PEARL ST	S 11TH ST & CYPRESS ST
12TH ST	1.05	N 12TH ST & W CUMBERLAND ST	N 12TH ST & JEFFERSON ST
13TH ST	0.86	S 13TH ST & CATHARINE ST	N 13TH ST & COMMERCE ST
15TH ST	0.61	N 15TH ST & W CLEARFIELD ST	N 15TH ST & W PACIFIC ST
16TH ST	0.55	N 16TH ST & WESTMONT ST	N 16TH ST & W OXFORD ST
17TH ST	0.99	N 17TH ST & W INDIANA AVE	N 17TH ST & FONTAIN ST
18TH ST	0.91	N 18TH ST & CALLOWHILL ST	S 18TH ST & CYPRESS ST
21ST ST	0.82	S 21ST ST & PIERCE ST	S 21ST ST & OREGON AVE
21ST ST	0.99	N 21ST ST & FAIRMOUNT AVE	S 21ST ST & LUDLOW ST
22ND ST	1.34	N 22ND ST & FAIRMOUNT AVE	S 22ND ST & CYPRESS ST
25TH ST	0.74	N 25TH ST & REDNER ST	N 25TH ST & W SEDGLEY AVE
26TH ST	1.15	S 26TH ST & SCHUYLKILL EXPY RAMP	S 26TH ST & PENROSE AVE
29TH ST	1.23	N 29TH ST & W HARPER ST	N 29TH ST & W GORDON ST
2ND ST	0.58	N 2ND ST & W CHEW AVE	N 2ND ST & W LAVEER ST
2ND ST	1.11	N 2ND ST & NEW ST	N 2ND ST & W THOMPSON ST
2ND ST	2.08	N 2ND ST & W DAUPHIN ST	N 2ND ST & W BRISTOL ST
38TH ST	0.38	S 38TH ST & UNIVERSITY AVE	38TH ST & MARKET ST
39TH ST	0.50	N 39TH ST & LANCASTER AVE	N 39TH ST & PARRISH ST
3RD ST	0.57	N 3RD ST & W HUNTING PARK AVE	N 3RD ST & W MENTOR ST
40TH ST	1.58	S 40TH ST & SPRUCE ST	N 40TH ST & PARKSIDE AVE
42ND ST	0.30	N 42ND ST & PENNSGROVE ST	N 42ND ST & LANCASTER AVE
42ND ST	0.53	S 42ND ST & CHESTER AVE	S 42ND ST & CHESTNUT ST
47TH ST	1.29	S 47TH ST & GRAYS FERRY AVE	S 47TH ST & CHESTNUT ST
49TH ST	0.20	S 49TH ST & GRAYS AVE	S 49TH ST & WOODLAND AVE
52ND ST	3.31	S 52ND ST & WOODLAND AVE	N 52ND ST & AVENUE OF THE REPUBLIC
54TH ST	0.71	S 54TH ST & FLORENCE AVE	S 54TH ST & PASCHALL AVE
54TH ST	0.93	N 54TH ST & CITY AVE	N 54TH ST & W MONTGOMERY AVE
54TH ST	0.99	S 54TH ST & BALTIMORE AVE	N 54TH ST & ARCH ST
56TH ST	0.49	S 56TH ST & WEBSTER ST	S 56TH ST & IRVING ST
57TH ST	0.50	N 57TH ST & N 59TH ST	N 57TH ST & WYNNEFIELD AVE
57TH ST	0.88	S 57TH ST & BALTIMORE AVE	S 57TH ST & SANSOM ST
58TH ST	0.11	S 58TH ST & THOMAS AVE	S 58TH ST & COBBS CREEK PKWY
58TH ST	0.56	S 58TH ST & TRINITY ST	S 58TH ST & GRAYS AVE
59TH ST	0.22	N 57TH ST & N 59TH ST	N 59TH ST & LANCASTER AVE
59TH ST	1.00	N 59TH ST & MEDIA ST	S 59TH ST & CHESTNUT ST
5TH ST	6.04	N 5TH ST & CAMBRIDGE ST	N 5TH ST & W CHELTENHAM AVE
61ST ST	0.91	S 61ST ST & BUIST AVE	S 61ST ST & W PASSYUNK AVE

STREET NAME	LENGTH (MILES)	TO (INTERSECTION)	FROM (INTERSECTION)
63RD ST	0.64	S 63RD ST & CHELWYNDE AVE	S 63RD ST & W PASSYUNK AVE
63RD ST	1.46	N 63RD ST & COBBS CREEK PKWY	N 63RD ST & MALVERN AVE
65TH ST	0.52	S 65TH ST & ALLMAN ST	S 65TH ST & WHEELER ST
66TH AVE	0.56	66TH AVE & OGONTZ AVE	N 13TH ST & 66TH AVE
70TH ST	0.52	S 70TH ST & LINMORE AVE	S 70TH ST & CITY BOUNDARY
70TH ST	0.69	S 70TH ST & LINDBERGH BLVD	S 70TH ST & ESSINGTON AVE
7TH ST	0.72	N 7TH ST & W HUNTINGDON ST	N 7TH ST & W GLENWOOD AVE
8TH ST	0.76	S 8TH ST & SAINT JAMES ST	N 8TH ST & CALLOWHILL ST
9TH ST	1.40	N 9TH ST & W LOUDON ST	N 9TH ST & W TIOGA ST
ACADEMY RD	2.61	ACADEMY RD & CHALFONT DR	ACADEMY RD & FRANKFORD AVE
ALLEGHENY AVE	1.93	N 33RD ST & W ALLEGHENY AVE	W ALLEGHENY AVE & W SEDGLEY AVE
ALLEGHENY AVE	2.64	W ALLEGHENY AVE & N FRANKLIN ST	E ALLEGHENY AVE & TILTON ST
AMERICAN ST	0.97	N AMERICAN ST & W INDIANA AVE	N AMERICAN ST & DIAMOND ST
ARAMINGO AVE	3.87	ARAMINGO AVE & HARBISON AVE	ARAMINGO AVE & E DAUPHIN ST
ARCH ST	0.71	ARCH ST & N INDEPENDENCE MALL W	ARCH ST & N BROAD ST
ARDLEIGH ST	0.63	ARDLEIGH ST & E CLIVEDEN ST	ARDLEIGH ST & E SEDGWICK ST
B ST	0.96	B ST & E CAMBRIA ST	B ST & E ERIE AVE
BALTIMORE AVE	0.09	BALTIMORE AVE & UNIVERSITY AVE	BALTIMORE AVE & WOODLAND AVE
BALTIMORE AVE	0.79	S 52ND ST & BALTIMORE AVE	S 59TH ST & BALTIMORE AVE
BARTRAM AVE	0.50	BARTRAM AVE & DELAWARE EXPY RAMP TP	S 88TH ST & BARTRAM AVE
BARTRAM AVE	0.81	BARTRAM AVE & PENROSE FERRY RD	BARTRAM AVE & ISLAND AVE
BELFIELD AVE	0.51	BELFIELD AVE & E WISTER ST	BELFIELD AVE & LINDLEY AVE
BELFIELD AVE	0.81	BELFIELD AVE & OLD YORK RD	BELFIELD AVE & LINDLEY AVE
BELMONT AVE	1.71	BELMONT AVE & BELMONT MANSION DR	BELMONT AVE & LANCASTER AVE
BELMONT MANSION DR	0.99	BELMONT DR & BELMONT MANSION DR	BELMONT MANSION DR & HORTICULTURAL DR
BENJAMIN FRANKLIN PKWY	0.56	BENJAMIN FRANKLIN PKWY & SPRING GARDEN ST	BENJAMIN FRANKLIN PKWY & LOGAN CIR E
BERKLEY ST	0.03	BERKLEY ST & ROBERTS AVE	BERKLEY ST & WAYNE AVE
BERKS ST	0.53	W BERKS ST & CADWALLADER ST	N 11TH ST & W BERKS ST
BRIDGE ST	1.09	BRIDGE ST & BUSTLETON AVE	BRIDGE ST & LANGDON ST
BRIDGE ST	1.10	BRIDGE ST & COTTAGE ST	BRIDGE ST & RICHMOND ST
BROAD ST	2.80	S BROAD ST & S PENN SQ	S BROAD ST & PACKER AVE
BROAD ST	7.66	N BROAD ST & CUTHBERT ST	N BROAD ST & W CHELTENHAM AVE
BUSTLETON AVE	0.90	BUSTLETON AVE & E ROOSEVELT BLVD	BRIDGE ST & FRANKFORD AVE
BUSTLETON AVE	7.74	BUSTLETON AVE & E ROOSEVELT BLVD	BUSTLETON AVE & COUNTY LINE RD
BUTLER ST	0.55	E BUTLER ST & E THOMPSON ST	E BUTLER ST & SEPVIVA ST
BYBERRY RD	1.51	BYBERRY RD & E ROOSEVELT BLVD	BUSTLETON AVE & BYBERRY RD
C ST	0.78	C ST & E COURTLAND ST	C ST & RISING SUN AVE
CASTOR AVE	1.35	CASTOR AVE & COTTMAN AVE	BUSTLETON AVE & CASTOR AVE
CASTOR AVE	1.56	E BRISTOL ST & CASTOR AVE	OXFORD CIR & E ROOSEVELT BLVD
CASTOR AVE	1.65	CASTOR AVE & COTTMAN AVE	CASTOR AVE & OXFORD CIR
CATHARINE ST	0.86	S 57TH ST & CATHARINE ST	S 49TH ST & BALTIMORE AVE
CAYUGA ST	0.86	E CAYUGA ST & G ST	E CAYUGA ST & O ST

STREET NAME	LENGTH (MILES)	TO (INTERSECTION)	FROM (INTERSECTION)
CECIL B MOORE AVE	0.90	CECIL B MOORE AVE & N CROSKEY ST	N 33RD ST & CECIL B MOORE AVE
CECIL B MOORE AVE	1.28	CECIL B MOORE AVE & WILLINGTON ST	N 2ND ST & CECIL B MOORE AVE
CEDAR AVE	1.28	S 46TH ST & CEDAR AVE	S 58TH ST & CEDAR AVE
CHELTENHAM AVE	1.01	E CHELTENHAM AVE & HAWTHORNE ST	CASTOR AVE & OXFORD CIR
CHELTENHAM AVE	1.80	N BROAD ST & W CHELTENHAM AVE	E CHELTENHAM AVE & CRESCENTVILLE RD
CHESTNUT ST	0.57	CHESTNUT ST & COBBS CREEK PKWY	S CECIL ST & CHESTNUT ST
CHESTNUT ST	2.35	S 11TH ST & CHESTNUT ST	S 40TH ST & CHESTNUT ST
CHEW AVE	0.20	CHEW AVE & W OLNEY AVE	CHEW AVE & CHURCH LN
CHEW AVE	0.81	W CHEW AVE & OGONTZ AVE	W CHEW AVE & DEAD END
CHRISTOPHER COLUMBUS BLVD	3.44	S CHRISTOPHER COLUMBUS BLVD & OREGON AVE	N CHRISTOPHER COLUMBUS BLVD & N DELAWARE AVE
CHURCH ST	0.54	CHURCH ST & JOSEPHINE ST	ARAMINGO AVE & CHURCH ST
CITY AVE	4.81	CITY AVE & CITY BOUNDARY	CITY AVE & LINCOLN DRIVE RAMP E
COBBS CREEK PKWY	1.77	S 58TH ST & COBBS CREEK PKWY	N 63RD ST & COBBS CREEK PKWY
COBBS CREEK PKWY	2.25	COBBS CREEK PKWY & HOFFMAN AVE	COBBS CREEK PKWY & ISLAND AVE
COMLY RD	0.80	COMLY RD & NORCOM RD	COMLY PL & COMLY RD
CONCOURSE DR	0.93	41ST ST DR & S CONCOURSE DR	AVENUE OF THE REPUBLIC & S CONCOURSE DR
COTTMAN AVE	2.79	COTTMAN AVE & VANDIKE ST	COTTMAN AVE & DORCAS ST
CUMBERLAND ST	0.61	W CUMBERLAND ST & W GLENWOOD AVE	W CUMBERLAND ST & N PARK AVE
DARIEN ST	0.73	S DARIEN ST & PACKER AVE	S DARIEN ST & DEAD END
DAUPHIN ST	0.85	N BROAD ST & W DAUPHIN ST	W DAUPHIN ST & N LEITHGOW ST
DELAWARE AVE	0.94	N DELAWARE AVE & E TIOGA ST	N DELAWARE AVE
DELAWARE AVE	0.69	E COLUMBIA AVE & N DELAWARE AVE	N CHRISTOPHER COLUMBUS BLVD & N DELAWARE AVE
DIAMOND ST	1.93	N 33RD ST & DIAMOND ST	N 11TH ST & DIAMOND ST
DUNCANNON AVE	0.79	E DUNCANNON AVE & RISING SUN AVE	W DUNCANNON AVE & N MARSHALL ST
EMERALD ST	0.52	E CAMBRIA ST & EMERALD ST	EMERALD ST & E MADISON ST
ERIE AVE	3.67	E ERIE AVE & KENSINGTON AVE	W ERIE AVE & W HUNTING PARK AVE
ESSINGTON AVE	1.03	ESSINGTON AVE & W PASSYUNK AVE	S 70TH ST & ESSINGTON AVE
F ST	0.49	F ST & WHITAKER AVE	F ST & E TABOR RD
FORD RD	1.01	BELMONT AVE & FORD RD	FORD RD & RECYCLING CENTER DWY
FOX ST	1.71	N 22ND ST & FOX ST	W COULTER ST & FOX ST
FRANKFORD AVE	1.79	FRANKFORD AVE & E SEDGLEY AVE	BRIDGE ST & FRANKFORD AVE
FRANKFORD AVE	0.53	COMLY ST & FRANKFORD AVE	BRIDGE ST & FRANKFORD AVE
FRANKFORD AVE	0.92	DISSTON ST & FRANKFORD AVE	FRANKFORD AVE & MERIDIAN ST
FRANKFORD AVE	2.19	FRANKFORD AVE & RED LION RD	FRANKFORD AVE & PENNYPACK ST
FRONT ST	0.61	N FRONT ST & W THOMPSON ST	N FRONT ST & OLIVE ST
FRONT ST	0.67	N FRONT ST & WENTZ ST	N FRONT ST & W LAVEER ST
FRONT ST	0.79	N FRONT ST & E STERNER ST	AMBER ST & N FRONT ST
FRONT ST	1.47	ROOSEVELT BLVD & N FRONT ST	N FRONT ST & E VENANGO ST
GERMANTOWN AVE	0.83	GERMANTOWN AVE & HARVEY ST	E ASHMEAD ST & GERMANTOWN AVE
GERMANTOWN AVE	0.95	N 10TH ST & GERMANTOWN AVE	W BUTLER ST & GERMANTOWN AVE
GIRARD AVE	2.12	N BAMBREY ST & W GIRARD AVE	W GIRARD AVE & LANCASTER AVE
GIRARD AVE	2.47	E BERKS ST & E GIRARD AVE	S COLLEGE AVE & W GIRARD AVE

STREET NAME	LENGTH (MILES)	TO (INTERSECTION)	FROM (INTERSECTION)
GLENWOOD AVE	0.82	DIAMOND ST & W GLENWOOD AVE	N 32ND ST & JEFFERSON ST
GODFREY AVE	0.91	ADAMS AVE & CRESCENTVILLE RD	N FAIRHILL ST & W GODFREY AVE
GRANT AVE	1.39	BLUE GRASS RD & GRANT AVE	GRANT AVE & WELSH RD
GRANT AVE	1.74	GRANT AVE & STATE RD	ACADEMY RD & GRANT AVE
GRAYS AVE	0.28	S 49TH ST & GRAYS AVE	GRAYS AVE & LINDBERGH BLVD
HARBISON AVE	0.54	HARBISON AVE & ROSALIE ST	CHARLES ST & HARBISON AVE
HAVERFORD AVE	0.61	HAVERFORD AVE & VINE ST	CRISTINA PL & HAVERFORD AVE
HAVERFORD AVE	0.94	CITY AVE & HAVERFORD AVE	N 68TH ST & HAVERFORD AVE
HENRY AVE	2.67	CINNAMINSON ST & HENRY AVE	HENRY AVE & W SCHOOL HOUSE LN
HOFFMAN AVE	0.10	COBBS CREEK PKWY & HOFFMAN AVE	S 58TH ST & COBBS CREEK PKWY
HUNTING PARK AVE	0.04	W HUNTING PARK AVE & W INDIANA AVE	W HUNTING PARK AVE
HUNTING PARK AVE	0.18	W HUNTING PARK AVE & W INDIANA AVE	W HUNTING PARK AVE & RIDGE AVE
HUNTING PARK AVE	2.26	E HUNTING PARK AVE & I ST	N BROAD ST & W HUNTING PARK AVE
HUNTING PARK AVE	2.09	N BROAD ST & W HUNTING PARK AVE	W HUNTING PARK AVE
I ST	1.32	I ST & KENSINGTON AVE	I ST & RAMONA AVE
INDEPENDENCE MALL	0.49	N 6TH ST & N INDEPENDENCE MALL W	S 6TH ST & WALNUT ST
IRVING ST	0.64	S 50TH ST & IRVING ST	S 56TH ST & IRVING ST
ISLAND AVE	2.46	ESCORT ST & ISLAND AVE	COBBS CREEK PKWY & ISLAND AVE
K ST	0.97	E CAYUGA ST & K ST	K ST & KENSINGTON AVE
KELLY DR	3.68	FALLS RD & KELLY DR	KELLY DR & SEDGELEY DR
KENSINGTON AVE	2.75	N FRONT ST & KENSINGTON AVE	FRANKFORD AVE & KENSINGTON AVE
KINGSESSING AVE	0.70	S 65TH ST & KINGSESSING AVE	S 58TH ST & KINGSESSING AVE
KNIGHTS RD	1.37	KNIGHTS RD & LANCELOT PL	CITY BOUNDARY & KNIGHTS RD
L ST	0.75	E CAYUGA ST & L ST	L ST & E SEDGLEY AVE
LANCASTER AVE	2.72	N 60TH ST & LANCASTER AVE	HAMILTON ST & LANCASTER AVE
LANSDOWNE AVE	0.87	N 75TH ST & LANSDOWNE AVE	N FELTON ST & LANSDOWNE AVE
LEHIGH AVE	1.75	N FRANKLIN ST & W LEHIGH AVE	ARAMINGO AVE & E LEHIGH AVE
LEVICK ST	0.93	BUSTLETON AVE & LEVICK ST	LEVICK ST & TACKAWANNA ST
LIMEKILN PIKE	0.53	LIMEKILN PIKE & E RITTENHOUSE ST	LIMEKILN PIKE & MEDARY AVE
LINCOLN DR	3.45	W DURHAM ST & LINCOLN DR	KELLY DR & LINCOLN DR
LINDBERGH BLVD	0.54	ISLAND AVE & LINDBERGH BLVD	S 72ND ST & LINDBERGH BLVD
LONGSHORE AVE	0.98	E ROOSEVELT BLVD	FRONTENAC ST & LONGSHORE AVE
LUZERNE ST	1.93	E LUZERNE ST & M ST	W LUZERNE ST & N REESE ST
LYCOMING ST	0.52	W LUZERNE ST & W LYCOMING ST	N 16TH ST & W LYCOMING ST
M ST	0.75	KENSINGTON AVE & M ST	E CAYUGA ST & M ST
MAIN ST	0.83	LOCK ST & MAIN ST	MAIN ST & RIDGE AVE
MARKET ST	2.62	N 63RD ST & COBBS CREEK PKWY	38TH ST & MARKET ST
MARKET ST	1.10	N FRONT ST & MARKET ST	JUNIPER ST & MARKET ST
MARKET ST	1.76	15TH ST & MARKET ST	38TH ST & MARKET ST
MARTIN LUTHER KING DR	3.53	BENJAMIN FRANKLIN PKWY & SPRING GARDEN ST	MARTIN LUTHER KING DR & MARTIN LUTHER KING DR RAM*
MASCHER ST	0.96	W CLEARFIELD ST & MASCHER ST	MASCHER ST & W SUSQUEHANNA AVE
NORRIS ST	0.85	N CARLISLE ST & W NORRIS ST	W NORRIS ST & N ORKNEY ST

STREET NAME	LENGTH (MILES)	TO (INTERSECTION)	FROM (INTERSECTION)
NORWITCH DR	0.55	S 67TH ST & NORWITCH DR	S 70TH ST & NORWITCH DR
OGDEN ST	0.48	OGDEN ST & UNION ST	BELMONT AVE & LANCASTER AVE
OGONTZ AVE	0.83	KEMBLE AVE & OGONTZ AVE	BELFIELD AVE & OGONTZ AVE
OGONTZ AVE	1.45	75TH AVE & OGONTZ AVE	MEDARY AVE & OGONTZ AVE
OLD BUSTLETON AVE	0.14	BUSTLETON AVE & OLD BUSTLETON AVE	OLD BUSTLETON AVE & WELSH RD
OLD YORK RD	1.38	W BUTLER ST & OLD YORK RD	LINDLEY AVE & OLD YORK RD
OLNEY AVE	1.60	CHEW AVE & W OLNEY AVE	N LAWRENCE ST & W OLNEY AVE
OREGON AVE	0.87	S BROAD ST & OREGON AVE	OREGON AVE & VARE AVE
OREGON AVE	0.99	S 5TH ST & OREGON AVE	S CHRISTOPHER COLUMBUS BLVD & OREGON AVE
OXFORD ST	0.77	N 24TH ST & W OXFORD ST	N 33RD ST & W OXFORD ST
PACKER AVE	0.72	S 15TH ST & PACKER AVE	S 7TH ST & PACKER AVE
PARKSIDE AVE	1.76	W GIRARD AVE & PARKSIDE AVE	BRYN MAWR AVE & PARKSIDE AVE
PARRISH ST	0.61	N 43RD ST & LANCASTER AVE	N 38TH ST & MANTUA AVE
PASCHALL AVE	1.15	S 62ND ST & PASCHALL AVE	ISLAND AVE & PASCHALL AVE
PASSYUNK AVE	0.62	ESSINGTON AVE & W PASSYUNK AVE	S 61ST ST & W PASSYUNK AVE
PASSYUNK AVE	1.15	W PASSYUNK AVE & SCHUYLKILL EXPY RAMP P	S BROAD ST & W PASSYUNK AVE
PASSYUNK AVE	1.01	W PASSYUNK AVE & SCHUYLKILL EXPY RAMP P	S 61ST ST & W PASSYUNK AVE
PENN ST	1.18	OVERINGTON ST & N PENN ST	BUSTLETON AVE & N PENN ST
PENROSE AVE	2.93	ISLAND AVE & PENROSE AVE	S 22ND ST & PENROSE AVE
POINT BREEZE AVE	0.66	S 20TH ST & FEDERAL ST	MC CLELLAN ST & POINT BREEZE AVE
RACE ST	1.14	N 18TH ST & BENJAMIN FRANKLIN PKWY	N INDEPENDENCE MALL E & RACE ST
RICHMOND ST	1.02	E ANN ST & RICHMOND ST	N DELAWARE AVE & N DELAWARE AVE RAMP E
RIDGE AVE	0.14	MAIN ST & RIDGE AVE	CITY AVE RAMP D & RIDGE AVE
RIDGE AVE	1.80	GINNODO ST & RIDGE AVE	N 33RD ST & RIDGE AVE
RIDGE AVE	0.57	N 33RD ST & RIDGE AVE	W HUNTING PARK AVE & RIDGE AVE
RISING SUN AVE	0.55	RISING SUN AVE & W VENANGO ST	N BROAD ST & W WESTMORELAND ST
RISING SUN AVE	0.70	DISSTON ST & RISING SUN AVE	RISING SUN AVE & SHELMIRE AVE
RISING SUN AVE	1.93	W LURAY ST & RISING SUN AVE	E CHELTENHAM AVE & RISING SUN AVE
ROBBINS ST	0.50	LORETTO AVE & ROBBINS ST	ROBBINS ST & E ROOSEVELT BLVD
ROBERTS AVE	0.11	ROBERTS AVE & WISSAHICKON AVE	ROBERTS AVE & W ROOSEVELT BLVD RAMP O
ROBERTS AVE	0.63	BERKLEY ST & ROBERTS AVE	ROBERTS AVE & WISSAHICKON AVE
ROBERTS AVE	0.68	HENRY AVE & ROBERTS AVE	ROBERTS AVE & WISSAHICKON AVE
ROOSEVELT BLVD	12.00	CITY BOUNDARY & E ROOSEVELT BLVD	W ROOSEVELT BLVD & W ROOSEVELT BLVD RAMP B
SAINT VINCENT ST	0.86	E ROOSEVELT BLVD & SAINT VINCENT ST	FRANKFORD AVE & SAINT VINCENT ST
SANSOM ST	0.69	FARRAGUT ST & SANSOM ST	S 53RD ST & SANSOM ST
SEDGLEY AVE	0.94	N 23RD ST & W SEDGLEY AVE	W MONTGOMERY AVE & W SEDGLEY AVE
SEDGLEY AVE	0.94	N 2ND ST & W ERIE AVE	W ALLEGHENY AVE & W SEDGLEY AVE
SOUTH ST	0.29	S 33RD ST & SOUTH ST	SCHUYLKILL EXPY RAMP C & SOUTH ST
SPRINGFIELD AVE	0.51	S 51ST ST & SPRINGFIELD AVE	S ITHAN ST & SPRINGFIELD AVE
SPRUCE ST	0.95	S 33RD ST & SOUTH ST	S 43RD ST & SPRUCE ST
SPRUCE ST	1.09	S 23RD ST & SPRUCE ST	SPRUCE ST & S WARNOCK ST
STATE RD	0.57	DELAIRE LANDING RD & STATE RD	CITY BOUNDARY & STATE RD

STREET NAME	LENGTH (MILES)	TO (INTERSECTION)	FROM (INTERSECTION)
STENTON AVE	1.13	CRESHEIM VALLEY DR & STENTON AVE	NEWTON ST & STENTON AVE
STENTON AVE	1.56	E JOHNSON ST & STENTON AVE	N BROAD ST & W GODFREY AVE
TABOR AVE	1.17	ADAMS AVE & TABOR AVE	ROBBINS ST & TABOR AVE
TABOR RD	0.15	ADAMS AVE & TABOR AVE	F ST & E TABOR RD
TACONY ST	1.02	PRATT ST & TACONY ST	NEWMAN COMPANY DWY & TACONY ST
TIOGA ST	0.68	COLLINS ST & E TIOGA ST	RAND ST & E TIOGA ST
TIOGA ST	0.82	N 5TH ST & W TIOGA ST	N CARLISLE ST & W TIOGA ST
TORRESDALE AVE	1.49	E ERIE AVE & KENSINGTON AVE	BRIDGE ST & TORRESDALE AVE
TORRESDALE AVE	1.98	HELLERMAN ST & TORRESDALE AVE	KRAYDOR ST & TORRESDALE AVE
TYSON AVE	0.92	CHARLES ST & TYSON AVE	CALVERT ST & TYSON AVE
UNIVERSITY AVE	0.56	S 38TH ST & UNIVERSITY AVE	UNIVERSITY AVE & SCHUYLKILL EXPY RAMP
UPSAL ST	1.11	MUSGRAVE ST & E UPSAL ST	LOWBER AVE & E UPSAL ST
VARE AVE	0.17	S 24TH ST & VARE AVE	W PASSYUNK AVE & VARE AVE
VARE AVE	0.07	S 24TH ST & VARE AVE	OREGON AVE & VARE AVE
VINE ST	1.06	N 20TH ST & BENJAMIN FRANKLIN PKWY	N 8TH ST & VINE ST
VINE ST	1.16	N GROSS ST & VINE ST	HAVERFORD AVE & VINE ST
WAGNER AVE	0.70	N BROAD ST & WAGNER AVE	W OLNEY AVE & WAGNER AVE
WALNUT ST	0.55	S 5TH ST & WALNUT ST	QUINCE ST & WALNUT ST
WALNUT ST	1.50	S 49TH ST & WALNUT ST	COBBS CREEK PKWY & WALNUT ST
WASHINGTON AVE	1.60	GRAYS FERRY AVE & WASHINGTON AVE	S DARIEN ST & WASHINGTON AVE
WASHINGTON LN	0.88	CLEARVIEW ST & E WASHINGTON LN	MC CALLUM ST & W WASHINGTON LN
WELSH RD	0.23	GRANT AVE & WELSH RD	BUSTLETON AVE & OLD BUSTLETON AVE
WELSH RD	1.02	OLD BUSTLETON AVE & WELSH RD	DONALDSON ST & WELSH RD
WESTMINSTER AVE	1.29	N 54TH ST & WESTMINSTER AVE	MANTUA AVE & WESTMINSTER AVE
WHITAKER AVE	1.83	B ST & E ERIE AVE	MAYFAIR ST & E ROOSEVELT BLVD
WISSAHICKON AVE	0.98	W HUNTING PARK AVE & WISSAHICKON AVE	HANSBERRY ST & WISSAHICKON AVE
WOLF ST	0.83	S BEULAH ST & WOLF ST	WECCACOE AVE & WOLF ST
WOODHAVEN RD	0.72	WOODHAVEN RD	WOODHAVEN RD
WOODHAVEN RD	0.80	WOODHAVEN RD	E ROOSEVELT BLVD RAMP E & WOODHAVEN RD
WOODLAND AVE	1.82	WOODLAND AVE & YOCUM STREET DWY	BALTIMORE AVE & WOODLAND AVE
WYNCOTE AVE	0.62	N 19TH ST & OGONTZ AVE	E CHELTEN AVE & WYNCOTE AVE
WYNNFIELD AVE	1.23	N 57TH ST & WYNNFIELD AVE	BELMONT AVE & WYNNFIELD AVE
WYOMING AVE	0.68	N 15TH ST & BELFIELD AVE	W ROOSEVELT BLVD & W WYOMING AVE
WYOMING AVE	2.11	N MARSHALL ST & W ROOSEVELT BLVD	CASTOR AVE & E WYOMING AVE