

# Expanding Pre-K: Implementation Plan

Mayor's Office of Education | City of Philadelphia



# Current Pre-K Landscape

- ❖ Currently, there is very limited access to quality pre-K
  - ❖ Gap between the amount of public subsidy provided per child to quality care providers and the cost of providing that care.
  - ❖ Quality care costs \$13,000 - \$14,000 (8 hours/day, 12 months/year).
  - ❖ The current maximum subsidy amount is \$10,500

Total 3 & 4 Year Olds	Children at or below 300% poverty (eligible for State and Federal Programs)	Current High Quality Slots	Gap of Children Still in Need
42,516	32,619	15,189	17,430

# Current Agencies Involved in Pre-K

## ❖ Federal Government

- Provides funding for **Head Start**.
- The federal government also provides funding through the **Child Care Fund**.

## ❖ State Agency

- Pennsylvania Office of Child Development and Early Learning (OCDEL)

## ❖ Southeast Regional Key (SERK)

- Develops and implements quality improvement and professional development support
- Oversees the **Keystone STARS**

## ❖ Child Care Information Services (CCIS)

- Manages child care subsidy program to help make childcare more affordable for low-income families

## Proposal: Expand Access to Quality Pre-K

- ❖ Multi-phase implementation process over the course of three years
- ❖ City will fund quality slots
- ❖ Slots will be full day, full year
- ❖ The City is investing \$60 million in:
  - ❖ New slots at \$8,500 (state cost/child)
  - ❖ Improving quality for lower-quality providers STARS 1 & 2

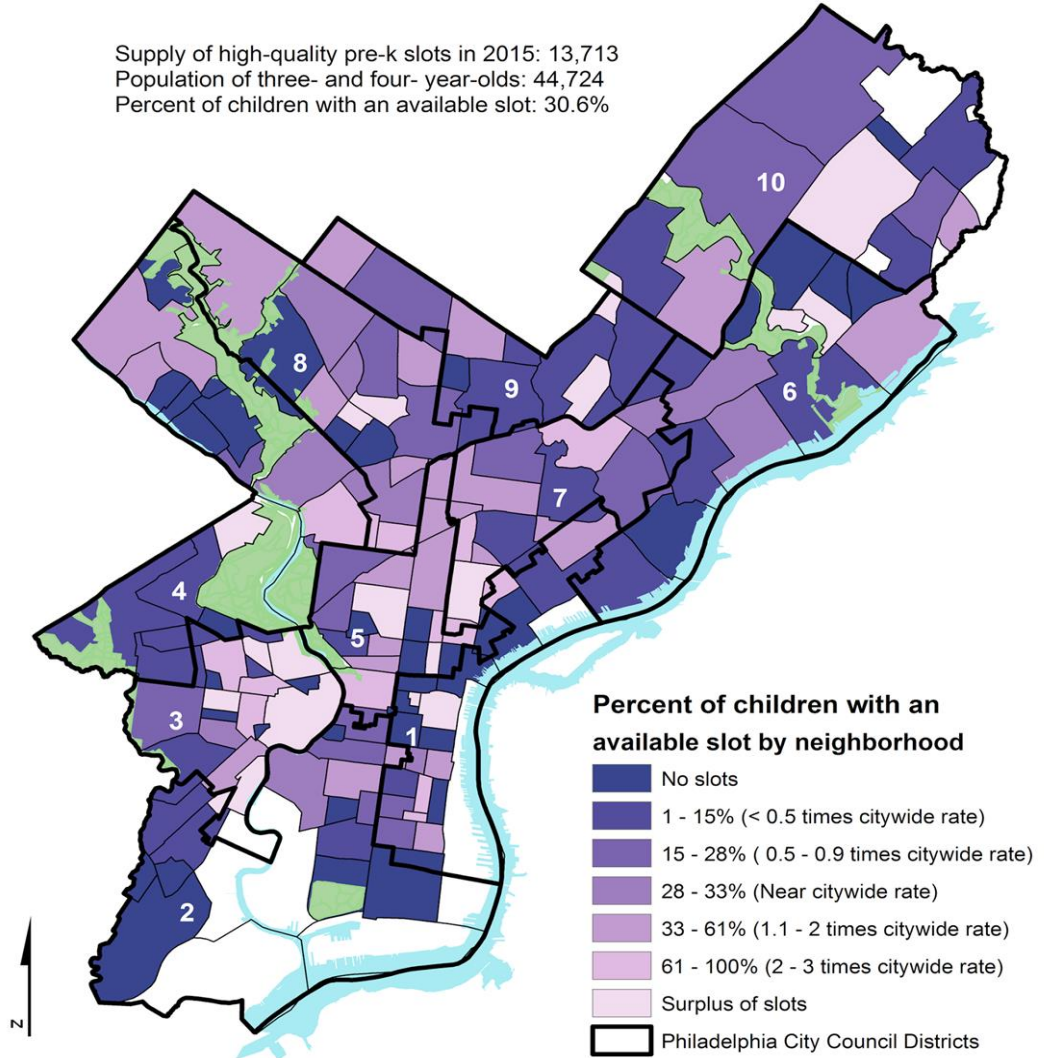
Year	FY17	FY18	FY19
Number of New Slots	2,000	2,250	2,250
			Total: 6,500

# Identifying the Location of New Slots

- ❖ Focus is to serve high need children **first**
- ❖ Will use existing data to determine intersection of locations
  - Children under five have multiple risk factors for academic failure
  - Current supply and demand of quality pre-K programs
  - Existing CCIS waitlists

# Supply of High-Quality Pre-K in Philadelphia: Slots for three- and four-year-olds

Supply of high-quality pre-k slots in 2015: 13,713  
 Population of three- and four- year-olds: 44,724  
 Percent of children with an available slot: 30.6%

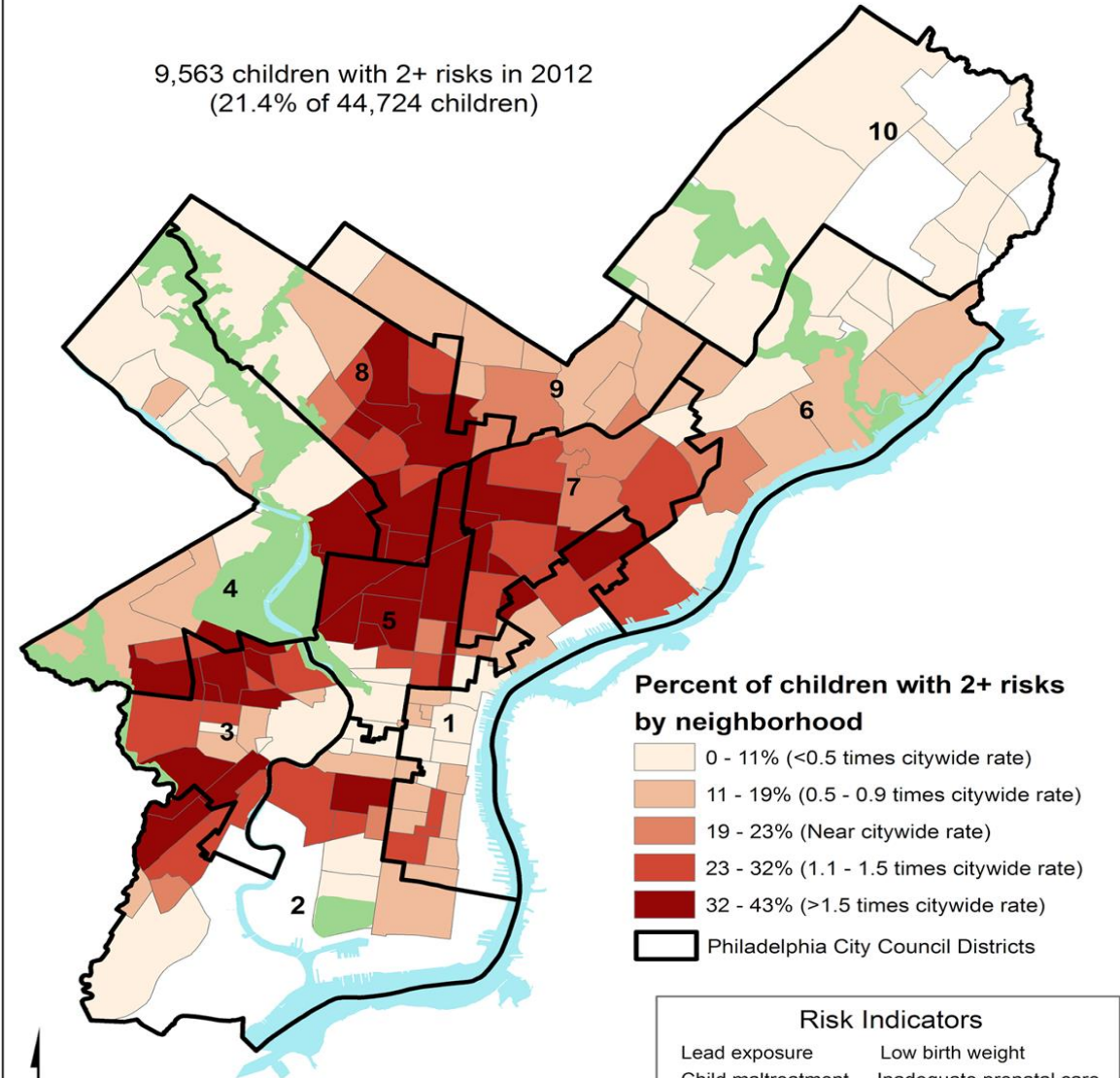


**High-Quality Pre-K**  
 Keystone STARS (3 & 4)    NAEYC or NAFCC Accredited  
 HeadStart    PA Pre-K Counts (including Bright Futures)

Note: Excluded neighborhoods with 10 or fewer children.

# Multiple Early Childhood Risks in Philadelphia: Three- and four-year-olds with two or more risks

9,563 children with 2+ risks in 2012  
 (21.4% of 44,724 children)



**Risk Indicators**

Lead exposure	Low birth weight
Child maltreatment	Inadequate prenatal care
Homelessness	Low maternal education
(Emergency shelter)	Teen pregnancy

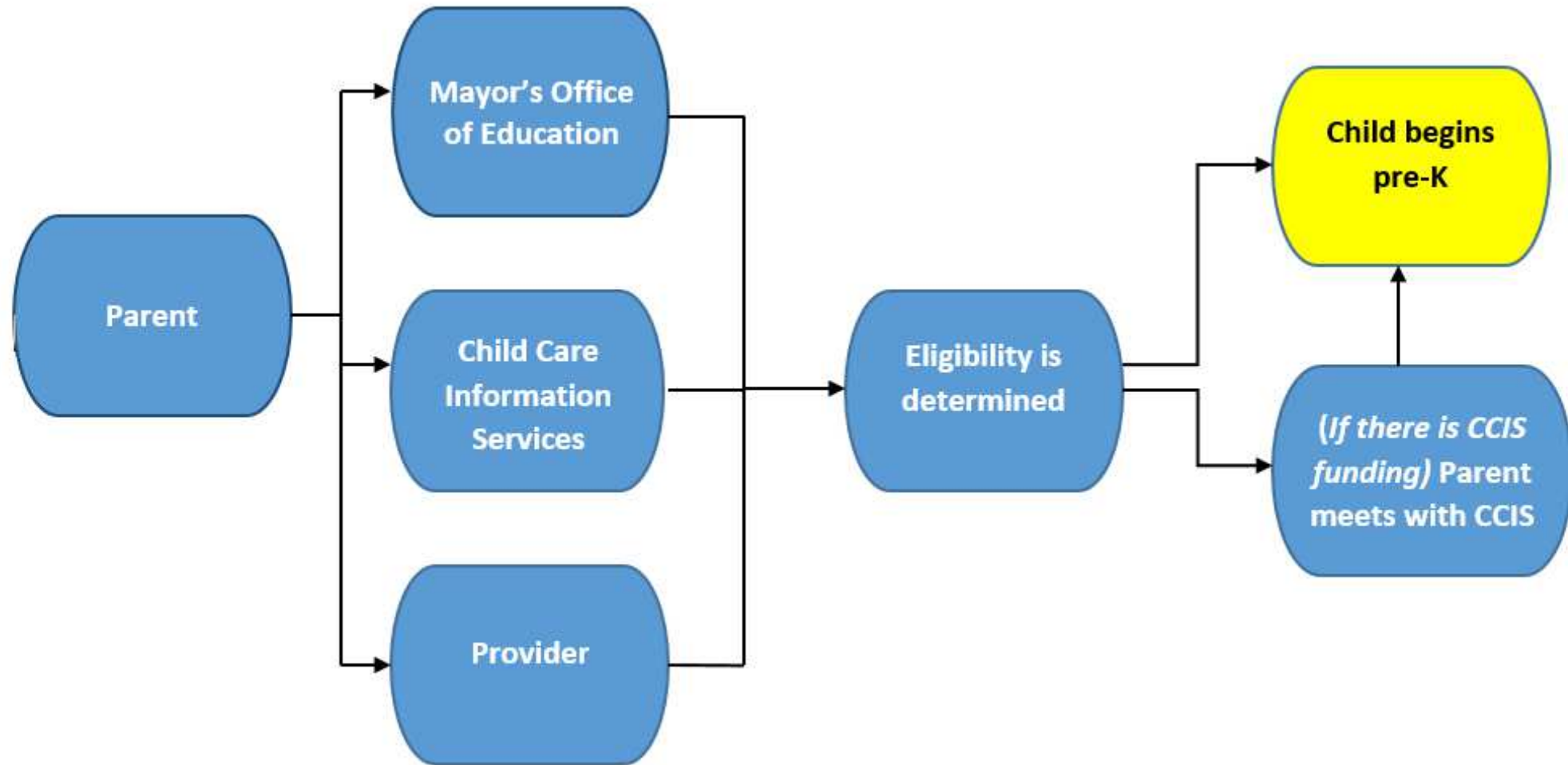
Note: Excluded neighborhoods with 10 or fewer children.

# Process for Enrollment

- ❖ Raise awareness among parents and providers
- ❖ Strategic alignment of communication between parents, providers, and early education stakeholders.
  - Mayor's Office, City Council, School District of Philadelphia, CCIS, and the State.
- ❖ Conducting research examining other city enrollment processes
- ❖ Goal: A streamlined enrollment process by January 2017



# Process of Enrollment

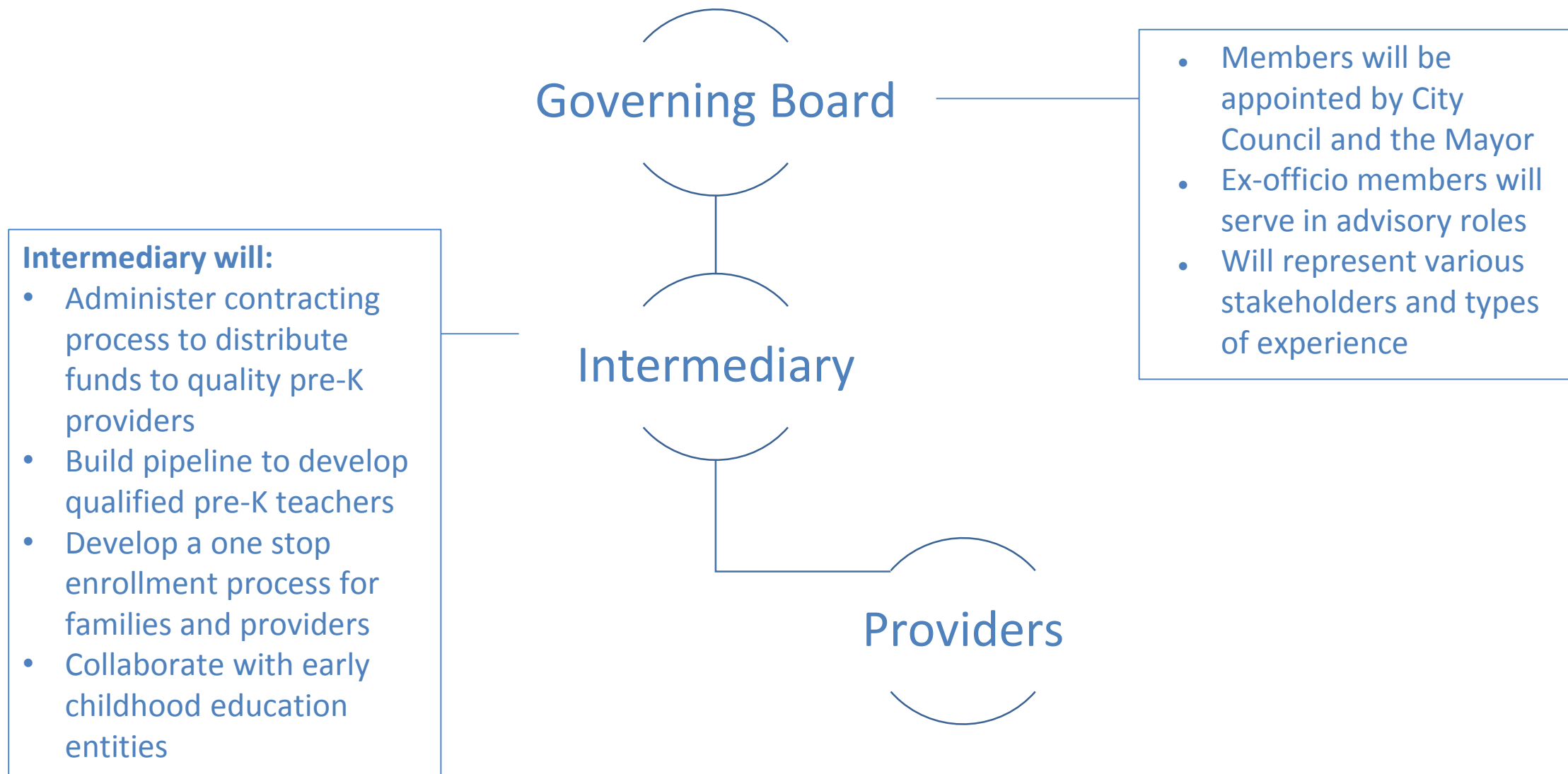




# Prioritizing Diversity and Inclusion

- ❖ The City will work to ensure that diversity is a key priority when selecting providers throughout the contracting process.
- ❖ The selection and contracting process for providing funds will focus on diverse, independent, and quality pre-K service providers.

# Possible Intermediary Governance Structure



# Developing the Workforce

## The Issue

- Child care workers lack the credentials needed for their early childhood education (ECE) centers to reach STARS 3 and 4.
- Teachers without college degrees earn only \$27,450 annually
- There is persistent turnover as teachers leave to enter the K-12 workforce for better wages and opportunities.

Qualified Workforce	Maximum Needed	Current Workforce	Gap
Teachers (BA)	2,127	685	952
Assistant Teachers (AA)	4,197	1,369	1904

## The City will:

- Partner with the Southeast Regional Key to determine the best path forward
- Capitalize on the Early Childhood Education career pathway at the Community College of Philadelphia
- Facilitate streamlined articulation agreements
- Accept STAR 2 programs for City funding contingent on their commitment to become STAR 3
- Work with high education institutions to support certification requirements, and college and advanced degree attainment

# Facilities

- ❖ William Penn Foundation committed \$15 Million dollars to the Fund for Quality.
  - Will help expand the number of classrooms through grants of up to \$300,000.
- ❖ Currently, the City, the Fund for Quality and the School District of Philadelphia are working together to assess available spaces for the placement of new quality pre-K classrooms over the next three years.
- ❖ Partnership with the Rebuild Initiative with a focus on libraries and recreation centers.

# Evaluation

- ❖ The City will evaluate:
  - ❖ The increase of Kindergarten readiness
  - ❖ The expansion and reach of quality pre-K opportunities
  - ❖ The growth of licensed providers enrolling into the state system
  
- ❖ To do this, the City will use data from:
  - ❖ The School District of Philadelphia
  - ❖ Southeast Regional Keys
  - ❖ Office of Child Development and Early Learning (OCDEL)