



CITY OF PHILADELPHIA
Department of Behavioral Health and Intellectual disAbility Services
Promoting Recovery, Resilience & Self Determination

Arthur C. Evans, Jr., Ph.D.
Commissioner

David T. Jones
Deputy Commissioner

Marquita Williams, Ph.D.
Deputy Commissioner

Matthew O. Hurford, M.D.
Chief Medical Officer

June 15, 2015

The Honorable Darrell Clarke
City Council President
City Hall, Room 490
Philadelphia, PA 19107

Dear Council President Clarke:

This letter is in response to questions raised at the April 29, 2015 Fiscal Year 2016 proposed budget hearing before the full Committee for the Department of Behavioral Health and Intellectual disAbility Services (DBHIDS). The questions were recorded as follows:

From Councilman Jones:

- 1. Have we mapped out providers and programs by District? If so, can you provide that information to the Chair?**

Please see Attachment 1 for the service location maps for each council district as well as a city-wide overview.

- 2. How many children who are in the public school system are eligible for Medicaid and are receiving services?**

Community Behavioral Health (CBH) is a not-for-profit 501c(3) corporation contracted by DBHIDS for the City of Philadelphia to provide mental health and substance abuse services for Philadelphia County Medicaid (MA) recipients. While CBH provides some school-based behavioral health treatment, there are a number of other behavioral health treatment and prevention programs available for youth that are not reimbursed via MA dollars.

According to the PEW Foundation, in 2014, there were 236,516 school-age children in Philadelphia. 192,462 of these children were enrolled in district run public schools or tax-payer funded charters. (PEW^[1]). In FY14, youth eligible for Medicaid, ages 5-18, numbered 191,189. Of those children eligible for MA, 34,794 received some level of school-based treatment and/or prevention services in public, charter, parochial and private schools across Philadelphia. 33,181 of these children participated in DBHIDS' Prevent programs or School Therapeutic Services (STS). STS is behavioral health treatment provided in public schools and a few tax-payer funded charter schools. In FY14, there were 103 STS programs across the city.

^[1] PEW, *Philadelphia 2015: The State Of The City*. Philadelphia: N.p., 2015. Print.

From Councilwoman Sanchez:

3. Can you provide the minority participation rates for contracting services?

The majority of our providers are not-for-profit which means they cannot be officially certified as Minority/Women/Disabled (MWD) providers. In lieu of certification, in collaboration with Health and Opportunity and the Office of Economic Opportunity, the Department has developed a process to determine if providers meet the intent of MWD participation by reflecting Philadelphia's population diversity. The Department reports MWD percentages to Health and Opportunity based on contract agencies' workforce composition, executive management cohorts, and boards of directors. As reported in our budget testimony, our largest contractors have achieved MWD compliance. The combined MWD percentages for the DBHIDS' system are as follows:

Workforce	75.9% MWD
Executive Management	65% MWD
Boards of Directors	55.4% MWD

Please feel free to contact me with questions you may have concerning the information provided in this response.

Sincerely,

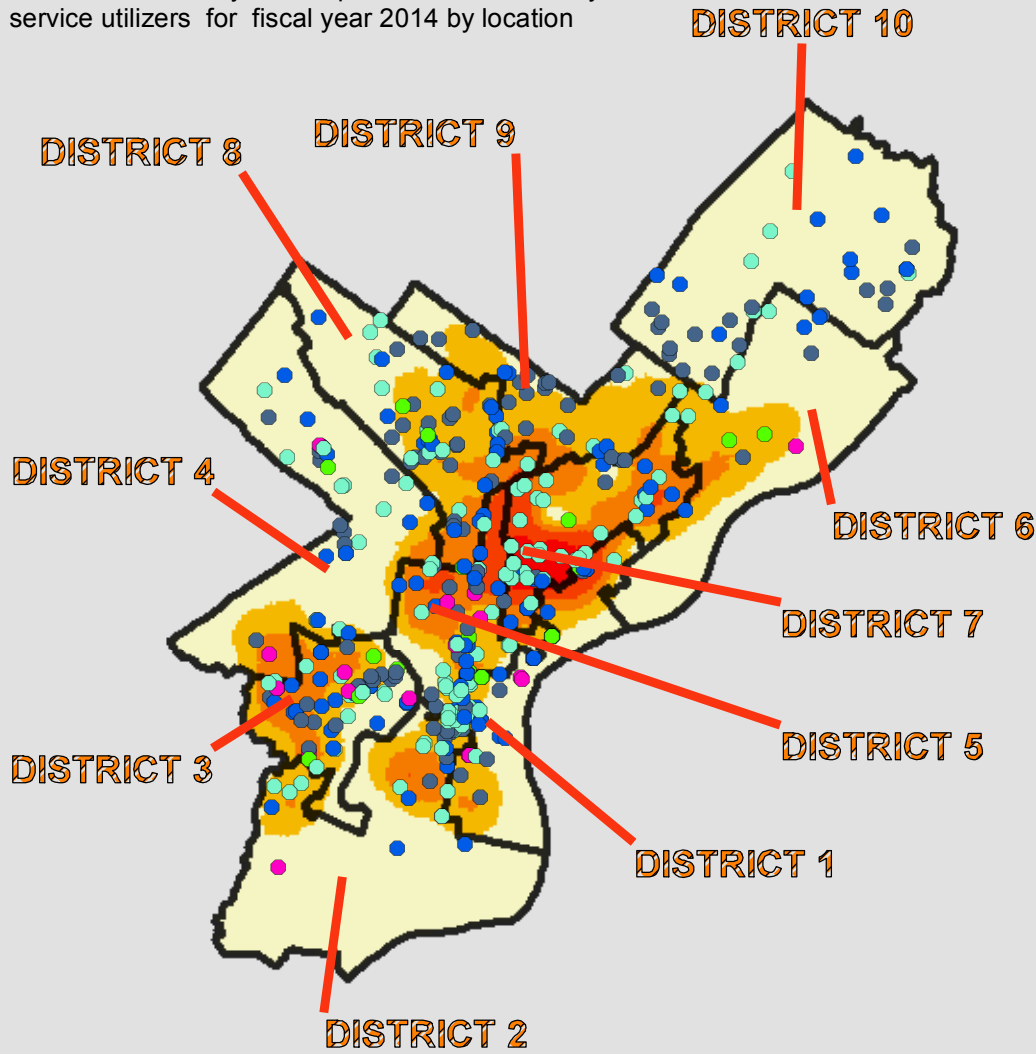


Arthur C. Evans
Commissioner

cc: Everett Gillison, Chief of Staff
Rob Dubow, Director of Finance
Rebecca Rhynhart, Budget Director
Cintya Ramos, Deputy Budget Director
David T. Jones, Deputy Commissioner
James Hoefler, Chief Financial Officer

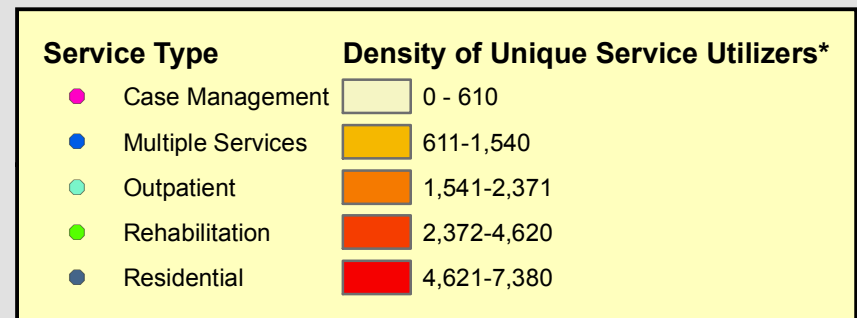
Program Sites and Density of Unique Service Recipients by City of Philadelphia Council District

The map represents Council Districts where Department of Behavioral Health (DBH) service agencies are located by type of service. Additionally, the map includes the density of service utilizers for fiscal year 2014 by location

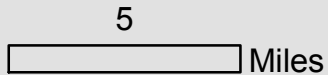


District	Council Name	Number of Utilizers	Number of Agencies	Total Population	Medicaid Population
District 1	Mark Squilla	9,248	58	163,832*	42,674
District 2	Kenyatta Johnson	7,650	33	146,245*	52,422
District 3	Jannie Blackwell	9,742	61	140,323*	59,813
District 4	Curtis Jones, Jr.	6,492	34	149,704*	40,361
District 5	Darrell L. Clarke	12,612	51	158,057*	59,085
District 6	Bobby Henon	7,977	14	166,554*	46,911
District 7	Maria D. Quinones-Sanchez	26,436	44	157,228*	100,438
District 8	Cindy Bass	11,463	50	136,058*	63,155
District 9	Marian B. Tasco	8,455	32	148,393*	57,837
District 10	Brian J. O'Neill	4,714	31	159,612*	30,051

* Data Source is Planning Commission and are estimates based upon census tract proportion in Council Districts.



*Indicates Density of Unique Utilizers in 1 square mile.



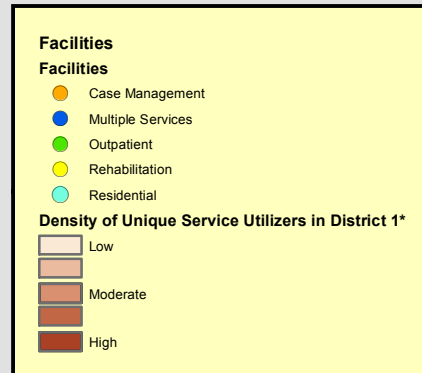
Department of Behavioral Health and Intellectual disAbility Service Behavioral Health Programs



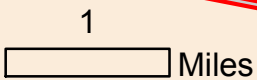
The map represents Council District 1 where Department of Behavioral Health (DBH) service agencies are located by type of service. Additionally, the map includes the density of service utilizers in district 1 for fiscal year 2014.

Council Name	Number of Utilizers	Number of Agencies	Total Population	Medicaid Population
District 1 Mark Squilla	9,248	58	163,832*	42,674

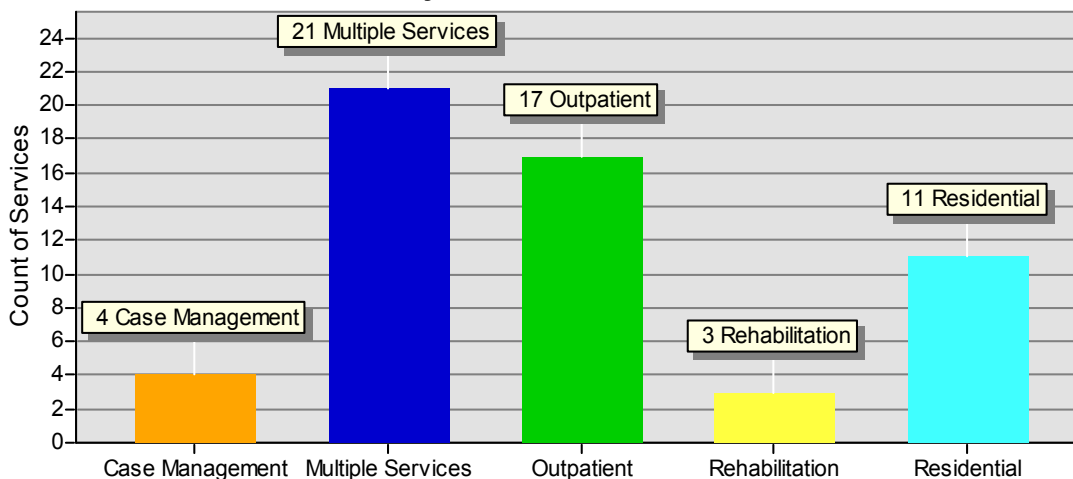
* Data Source is Planning Commission and are estimates based upon census tract proportion in Council Districts.



*Indicates Density of Unique Utilizers in 1 square mile.



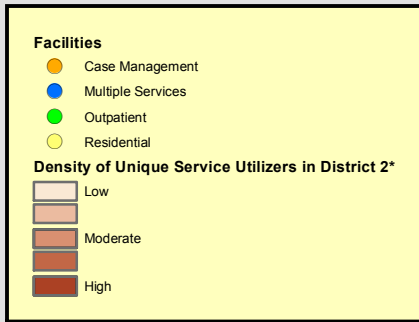
Summary of Services in District 1



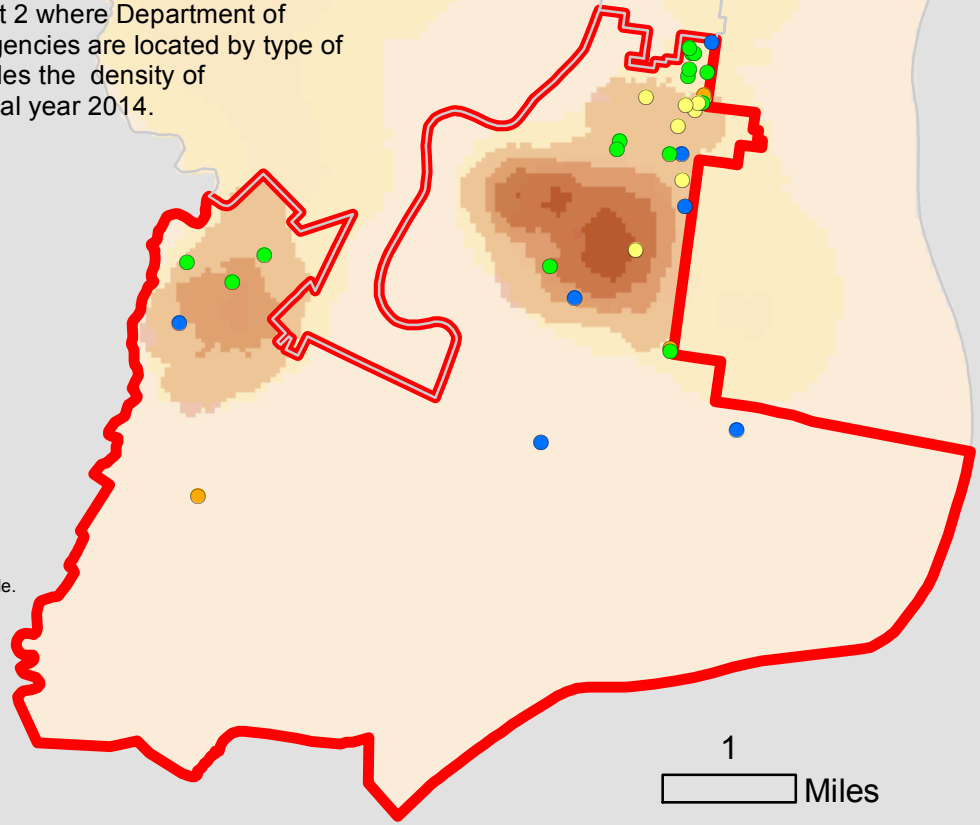
Department of Behavioral Health and Intellectual disAbility Service Behavioral Health Programs



The map represents Council District 2 where Department of Behavioral Health (DBH) service agencies are located by type of service. Additionally, the map includes the density of service utilizers in district 2 for fiscal year 2014.



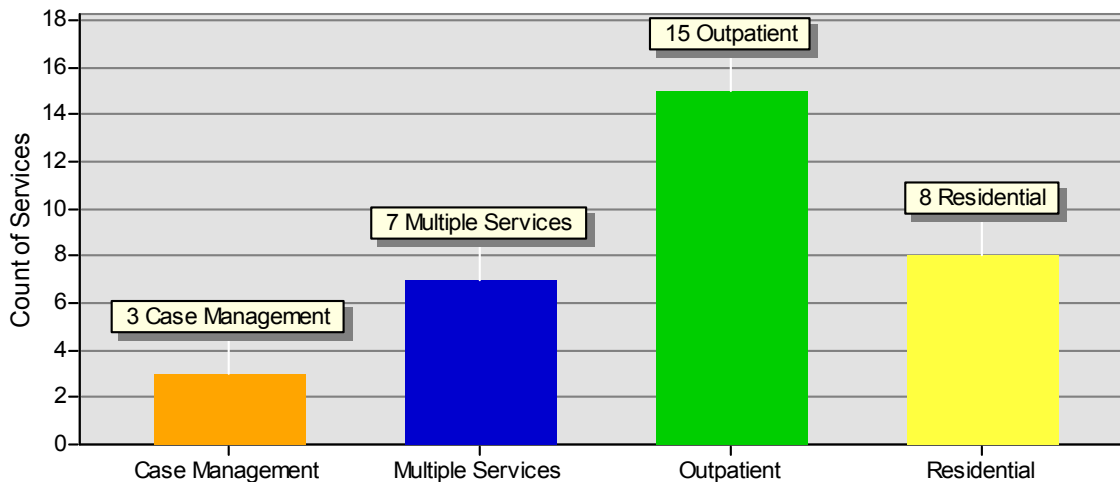
*Indicates Density of Unique Utilizers in 1 square mile.



Council Name	Number of Utilizers	Number of Agencies	Total Population	Medicaid Population
District 2 Kenyatta Johnson	7,650	33	146,245*	52,422

* Data Source is Planning Commission and are estimates based upon census tract proportion in Council Districts.

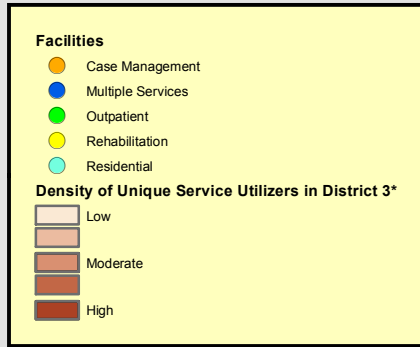
Summary of Services in District 2



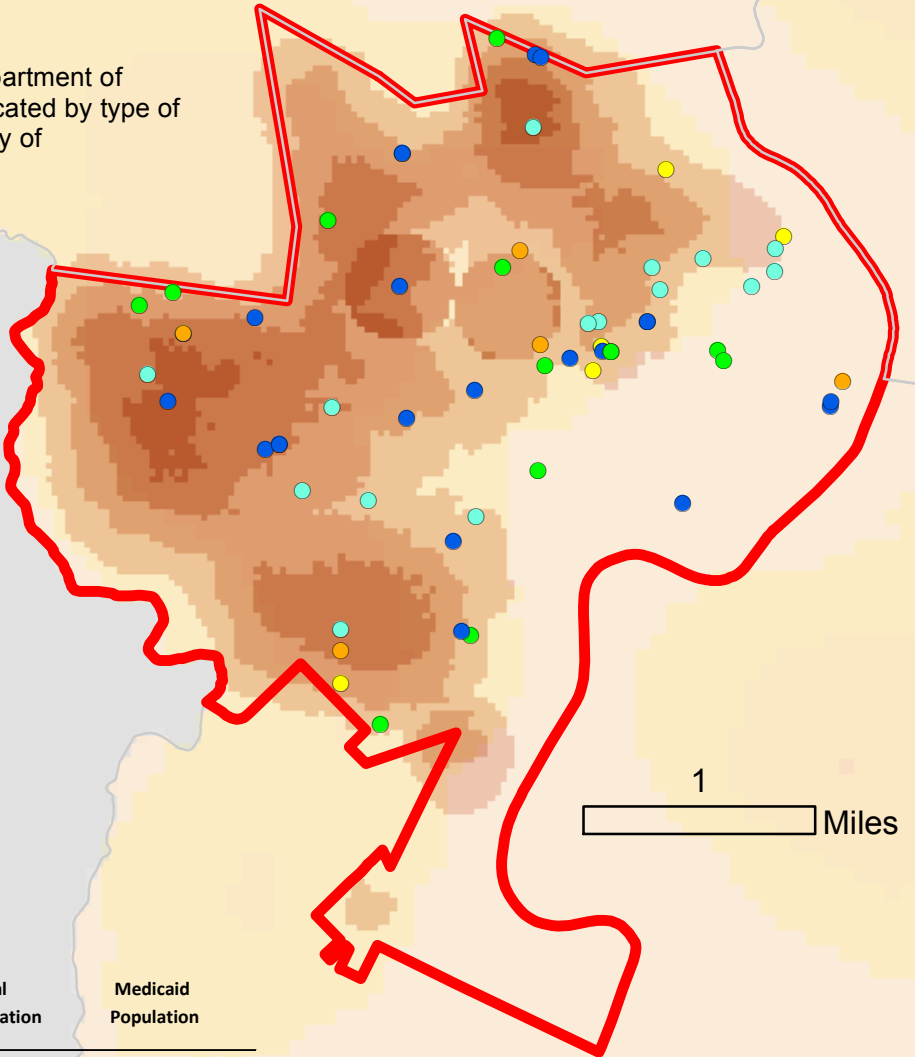
Department of Behavioral Health and Intellectual disAbility Service Behavioral Health Programs



The map represents Council District 3 where Department of Behavioral Health (DBH) service agencies are located by type of service. Additionally, the map includes the density of service utilizers in district 3 for fiscal year 2014.



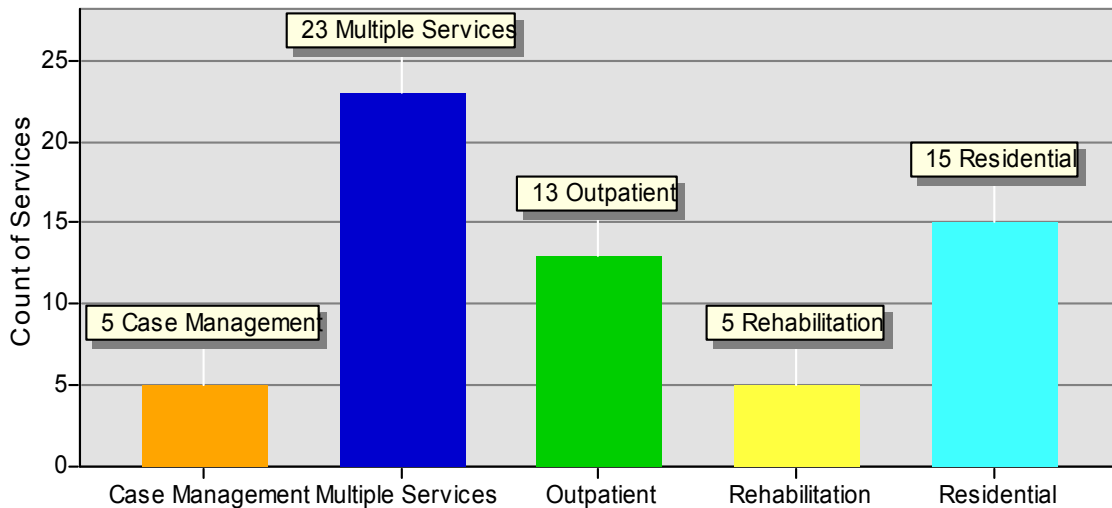
*Indicates Density of Unique Utilizers in 1 square mile.



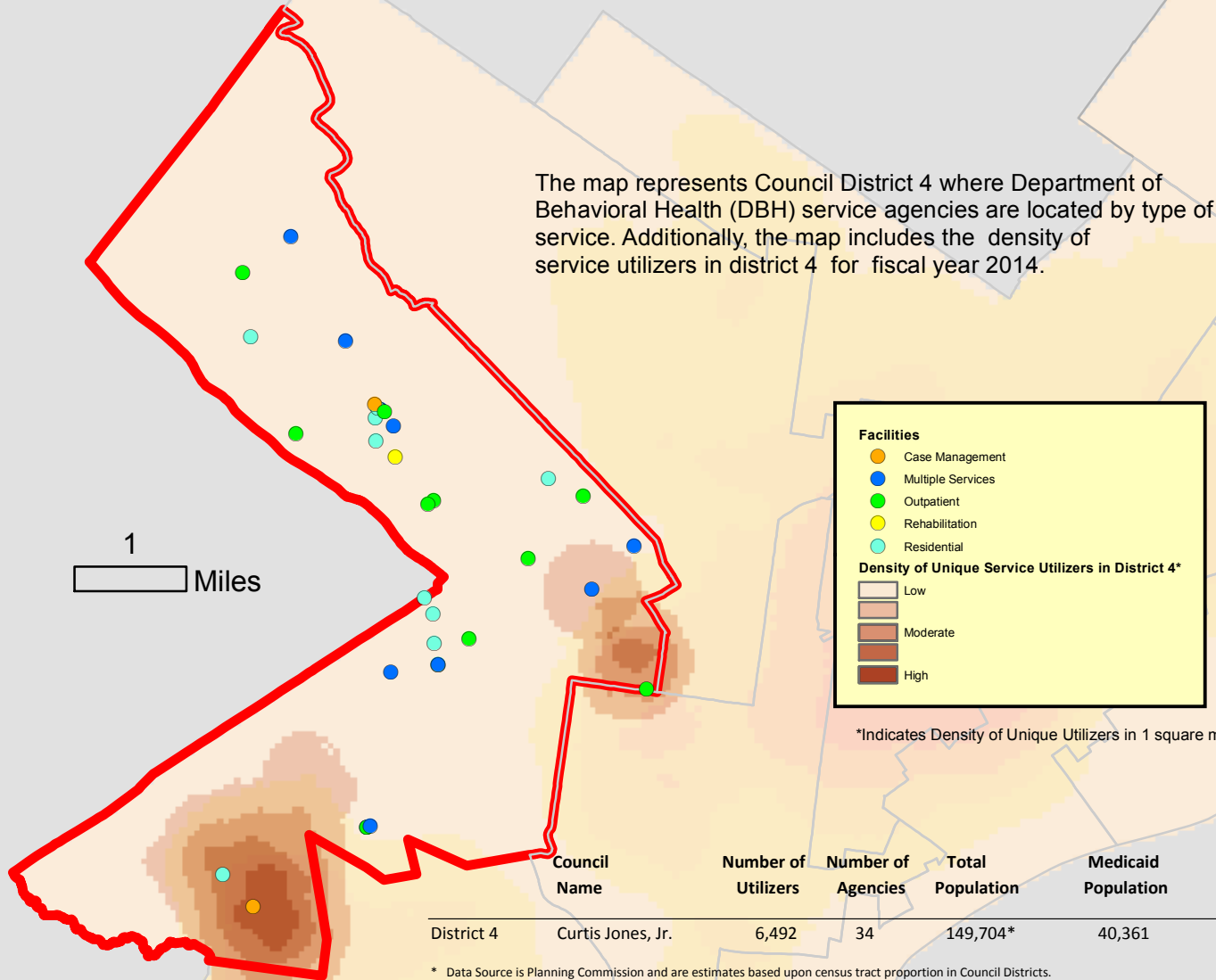
Council Name	Number of Utilizers	Number of Agencies	Total Population	Medicaid Population
District 3 Jannie Blackwell	9,742	61	140,323*	59,813

* Data Source is Planning Commission and are estimates based upon census tract proportion in Council Districts.

Summary of Services in District 3

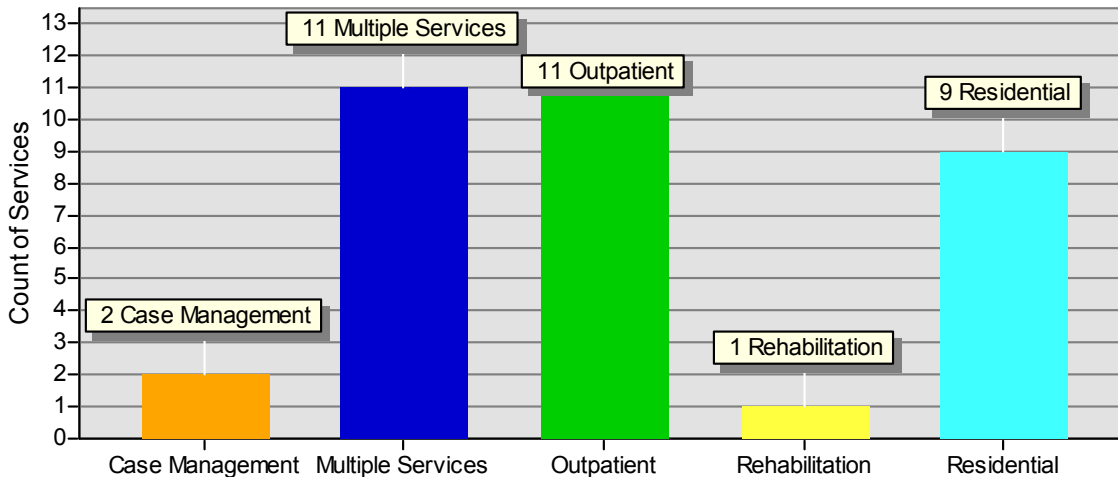


Department of Behavioral Health and Intellectual disAbility Service Behavioral Health Programs



* Data Source is Planning Commission and are estimates based upon census tract proportion in Council Districts.

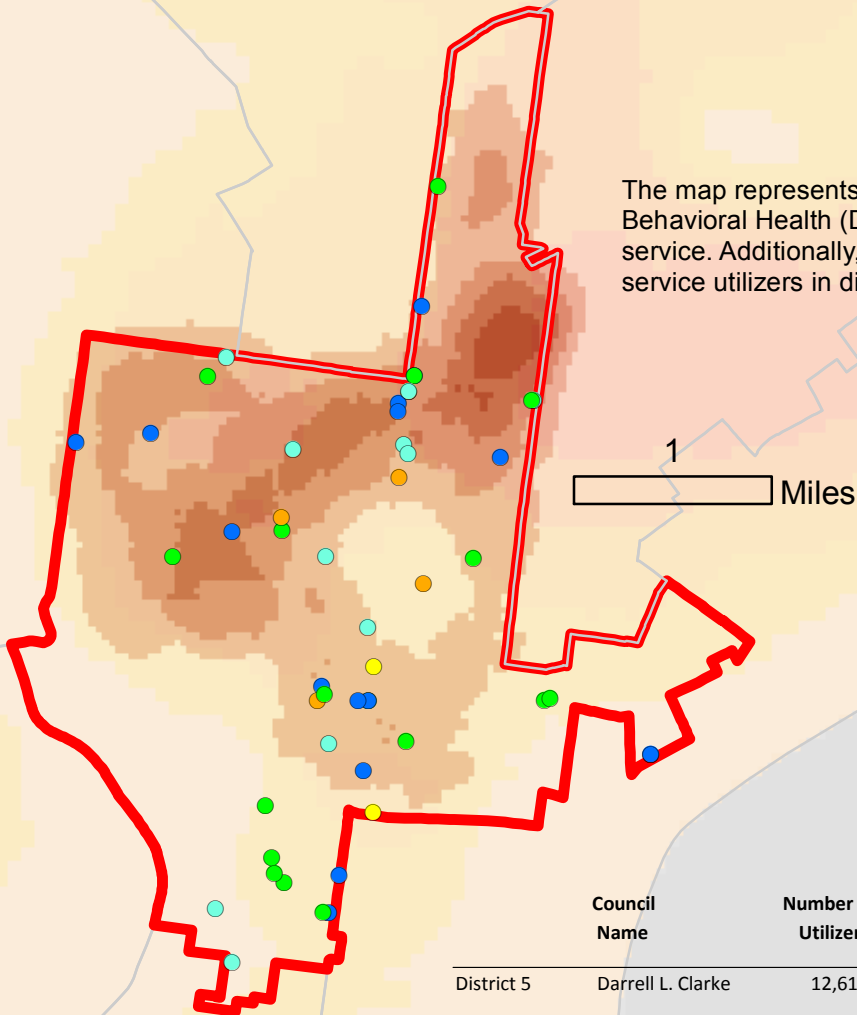
Summary of Services in District 4





Department of Behavioral Health and Intellectual disAbility Service Behavioral Health Programs

The map represents Council District 5 where Department of Behavioral Health (DBH) service agencies are located by type of service. Additionally, the map includes the density of service utilizers in district 5 for fiscal year 2014.



Facilities

- Case Management
- Multiple Services
- Outpatient
- Rehabilitation
- Residential

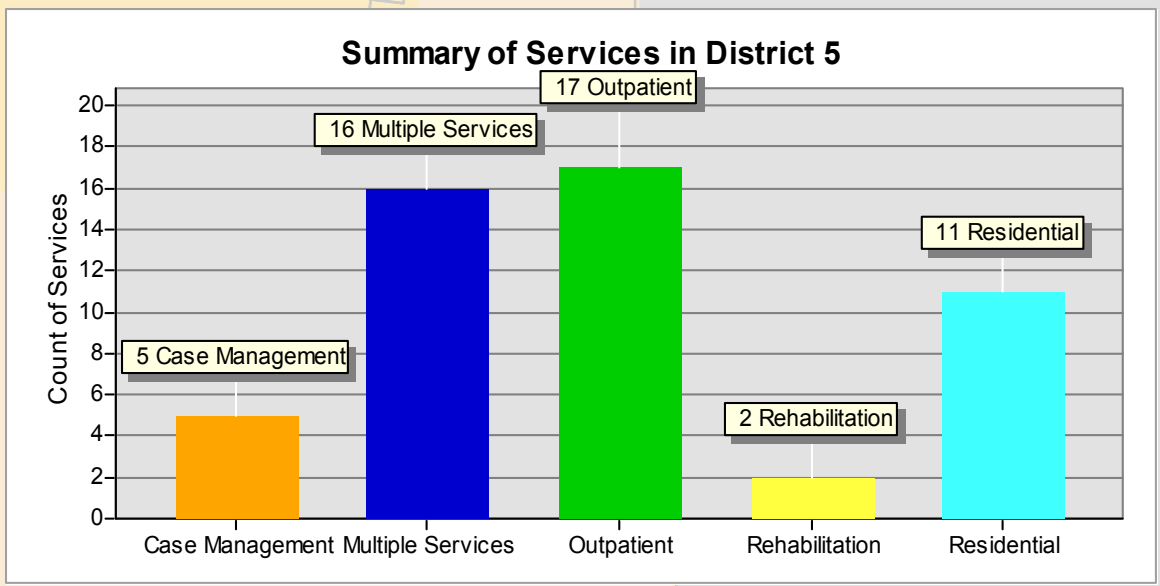
Density of Unique Service Utilizers in District 5*

- Low
- Moderate
- High

*Indicates Density of Unique Utilizers in 1 square mile.

Council Name	Number of Utilizers	Number of Agencies	Total Population	Medicaid Population
District 5 Darrell L. Clarke	12,612	51	158,057*	59,085

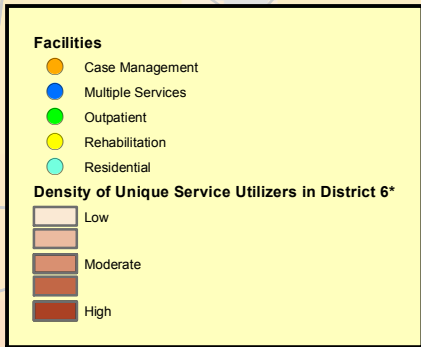
* Data Source is Planning Commission and are estimates based upon census tract proportion in Council Districts.





Department of Behavioral Health and Intellectual disAbility Service Behavioral Health Programs

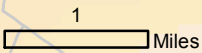
The map represents Council District 6 where Department of Behavioral Health (DBH) service agencies are located by type of service. Additionally, the map includes the density of service utilizers in district 6 for fiscal year 2014.



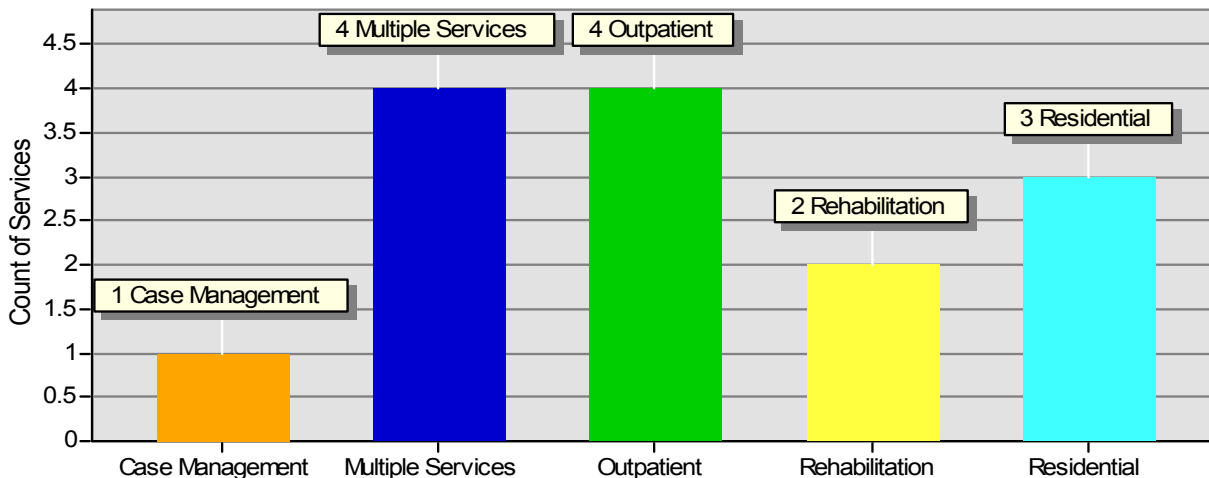
*Indicates Density of Unique Utilizers in 1 square mile.

Council Name	Number of Utilizers	Number of Agencies	Total Population	Medicaid Population
District 6 Bobby Henon	7,977	14	166,554*	46,911*

Data Source is Planning Commission and are estimates based upon census tract proportion in Council Districts.



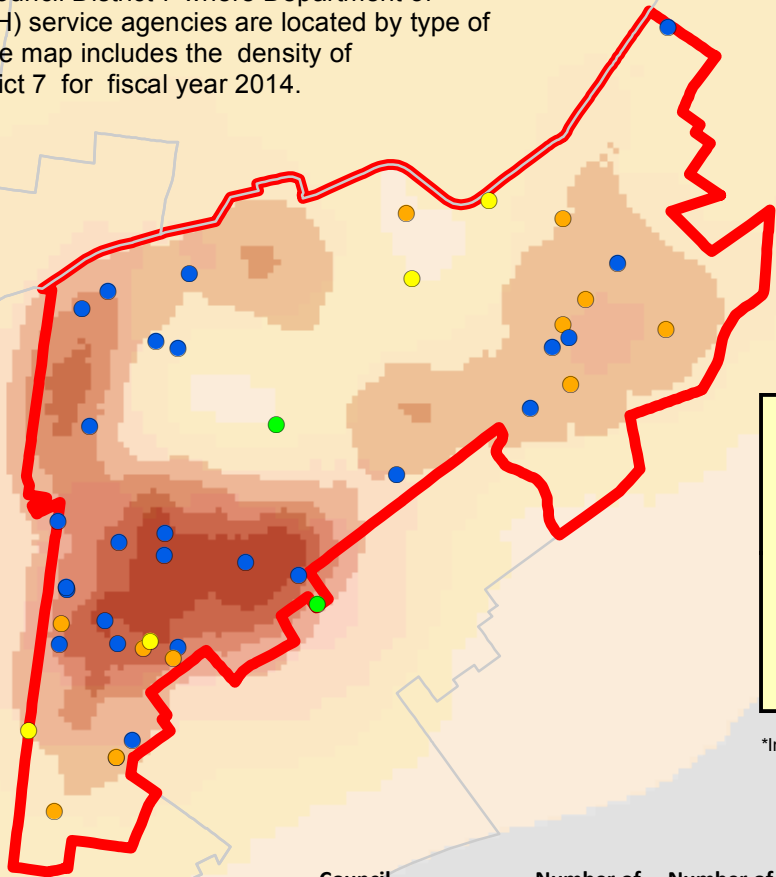
Summary of Services in District 6





Department of Behavioral Health and Intellectual disAbility Service Behavioral Health Programs

The map represents Council District 7 where Department of Behavioral Health (DBH) service agencies are located by type of service. Additionally, the map includes the density of service utilizers in district 7 for fiscal year 2014.



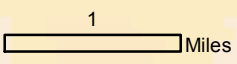
Facilities

- Multiple Services
- Outpatient
- Rehabilitation
- Residential

Density of Unique Service Utilizers in District 7*

- Low
- Moderate
- High

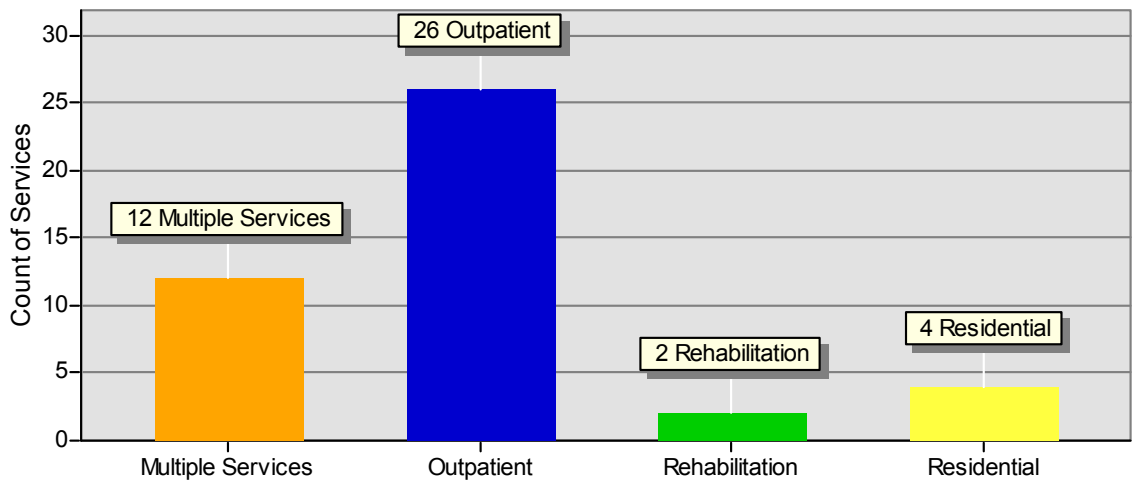
*Indicates Density of Unique Utilizers in 1 square mile.



Council Name	Number of Utilizers	Number of Agencies	Total Population	Medicaid Population
District 7 Maria D. Quinones-Sanchez	26,436	44	157,228*	100,438

Data Source is Planning Commission and are estimates based upon census tract proportion in Council Districts.

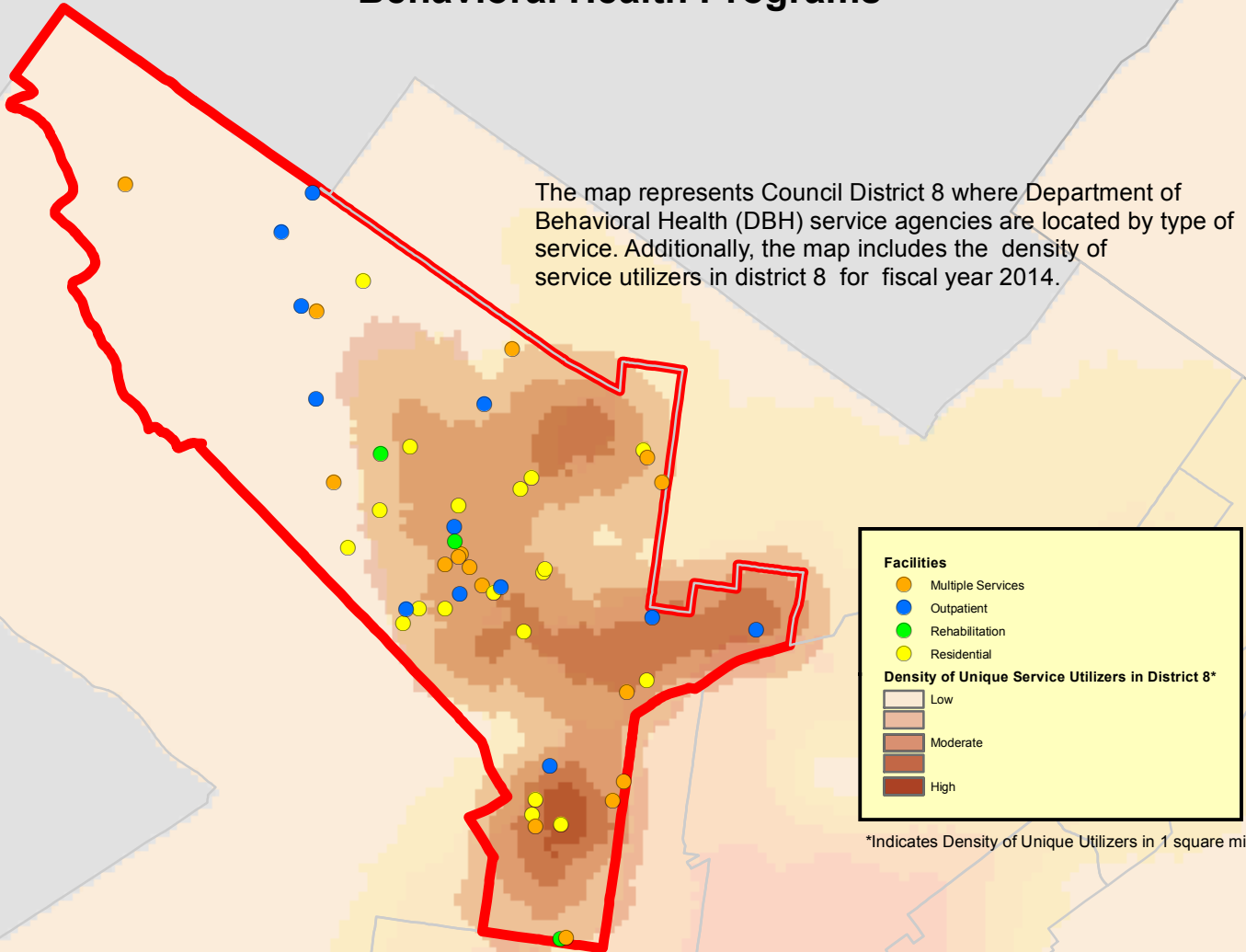
Summary of Services in District 7





Department of Behavioral Health and Intellectual disAbility Service Behavioral Health Programs

The map represents Council District 8 where Department of Behavioral Health (DBH) service agencies are located by type of service. Additionally, the map includes the density of service utilizers in district 8 for fiscal year 2014.



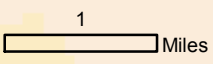
Facilities

- Multiple Services
- Outpatient
- Rehabilitation
- Residential

Density of Unique Service Utilizers in District 8*

- Low
- Moderate
- High

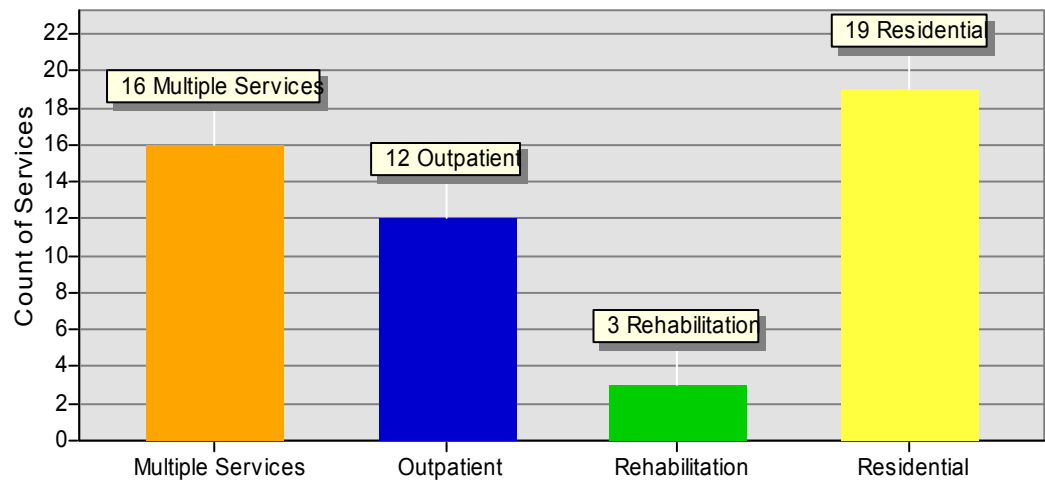
*Indicates Density of Unique Utilizers in 1 square mile.



Council Name	Number of Utilizers	Number of Agencies	Total Population	Medicaid Population
District 8 Cindy Bass	11,463	50	136,058*	63,155

Data Source is Planning Commission and are estimates based upon census tract proportion in Council Districts.

Summary of Services in District 8

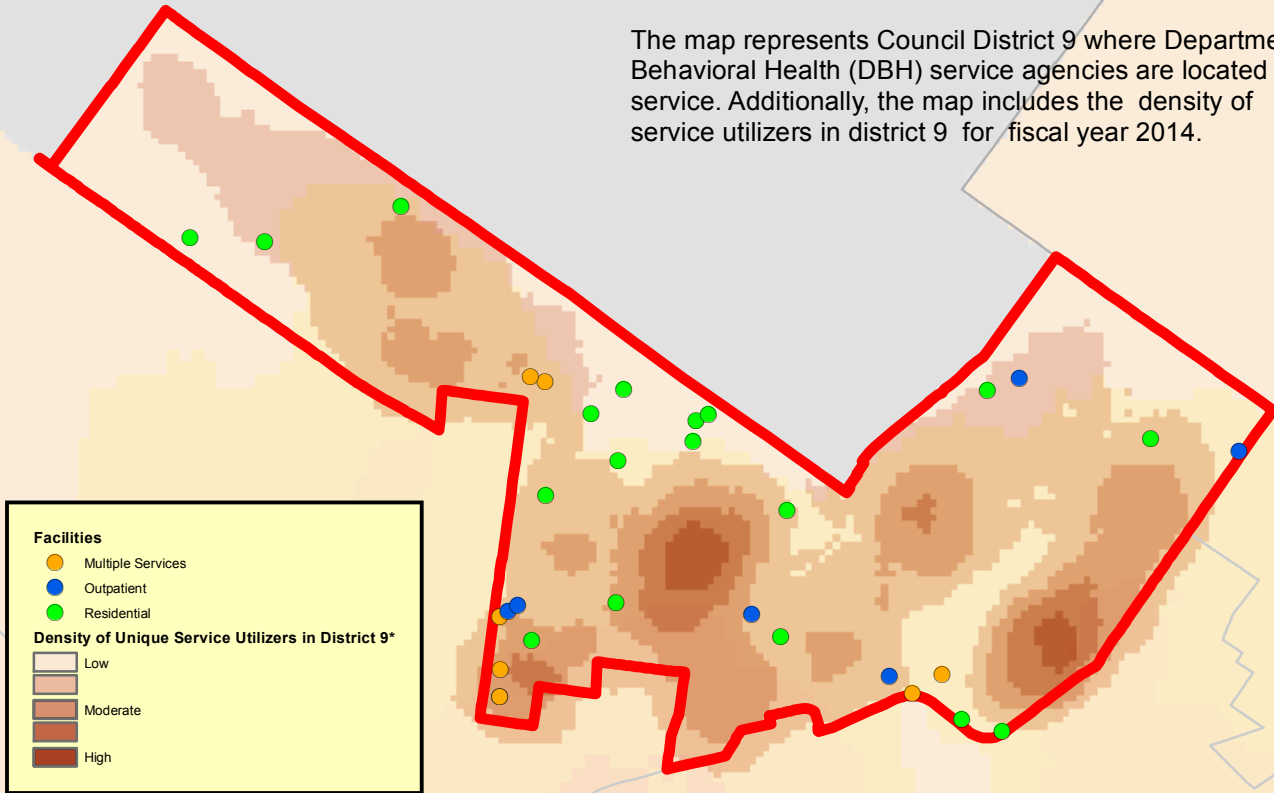


Created by: Research and Information Management
 Dept of Behavioral Health and Intellectual disAbilities Services
 City of Philadelphia on 04/13/2015
 SOURCES: CITY GIS SERVER (Planning), RIM Data, CBH
 BHSI, OAS
 DATA FILE: Council_Districts_2016, RIM FACILITY



Department of Behavioral Health and Intellectual disAbility Service Behavioral Health Programs

The map represents Council District 9 where Department of Behavioral Health (DBH) service agencies are located by type of service. Additionally, the map includes the density of service utilizers in district 9 for fiscal year 2014.



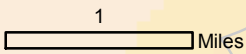
Facilities

- Multiple Services
- Outpatient
- Residential

Density of Unique Service Utilizers in District 9*

- Low
- Moderate
- High

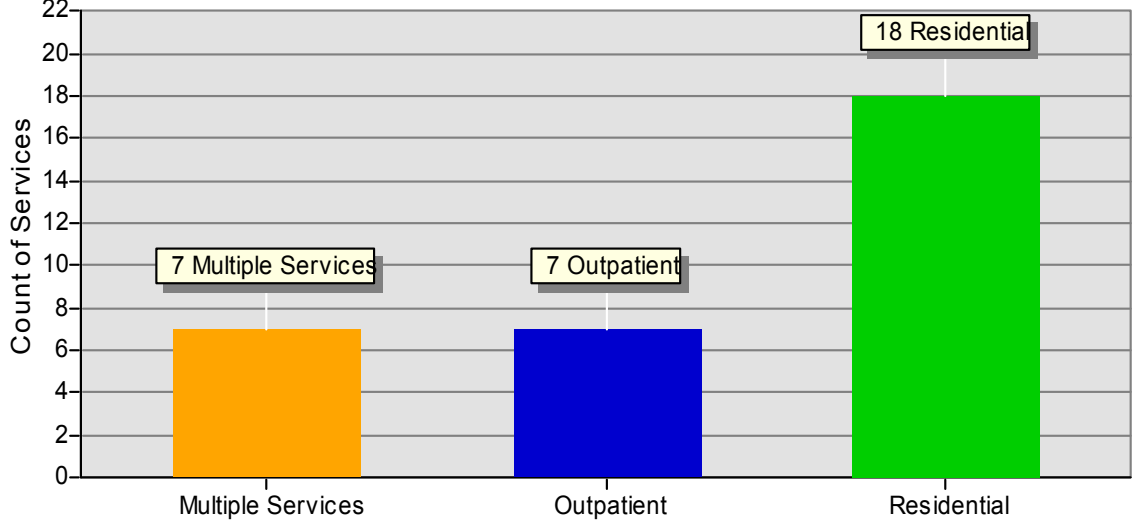
*Indicates Density of Unique Utilizers in 1 square mile.



Council Name	Number of Utilizers	Number of Agencies	Total Population	Medicaid Population
District 9	8,455	32	148,393*	57,837

Data Source is Planning Commission and are estimates based upon census tract proportion in Council Districts.

Summary of Services in District 9

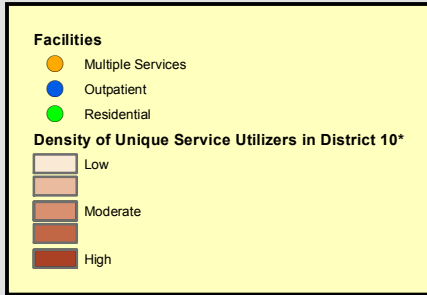


Created by: Research and Information Management
Dept of Behavioral Health and Intellectual disAbilities Services
City of Philadelphia on 04/13/2015
SOURCES: CITY GIS SERVER (Planning), RIM Data, CBH
BHSI, OAS
DATA FILE: Council_Districts_2016, RIM FACILITY

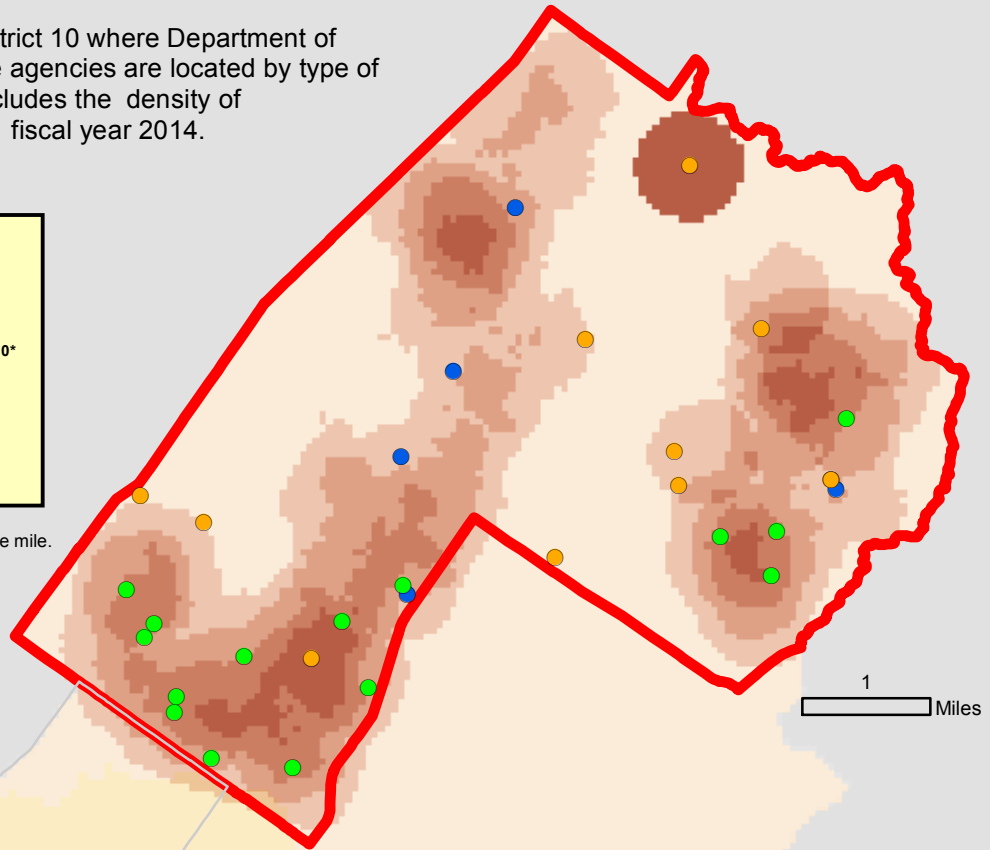
Department of Behavioral Health and Intellectual disAbility Service Behavioral Health Programs



The map represents Council District 10 where Department of Behavioral Health (DBH) service agencies are located by type of service. Additionally, the map includes the density of service utilizers in district 10 for fiscal year 2014.



*Indicates Density of Unique Utilizers in 1 square mile.



Council Name	Number of Utilizers	Number of Agencies	Total Population	Medicaid Population
District 10 Brian J. O'Neill	4,714	31	159,612*	30,051

Data Source is Planning Commission and are estimates based upon census tract proportion in Council Districts.

Summary of Services in District 10

